

The Fourth

Aichi Multicultural Coexistence Promotion Plan

2023 - 2027

Outline



Purpose of the Plan

The number of foreign residents in Aichi Prefecture is estimated to continue to increase due to system reforms such as the creation of the status of residence “specified skilled worker.” With a declining population, falling birthrate, and aging society, it is expected that foreign residents in the prefecture will play an important role in supporting local communities. To respond to social changes like this and further promote multicultural coexistence through its policies, Aichi Prefecture has formulated the Fourth Aichi Multicultural Coexistence Promotion Plan (“the Plan”).

Status of the Plan

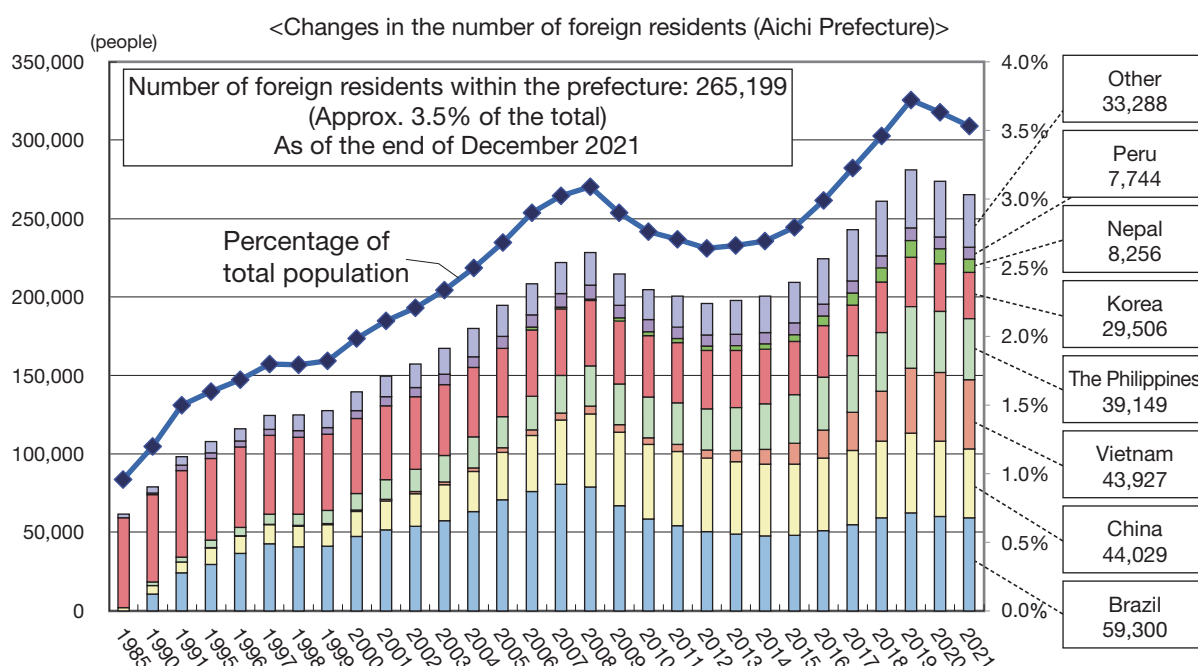
The Plan is an individual plan that clarifies the principles and ideas behind Aichi Prefecture’s policies to promote multicultural coexistence, in line with the course of action advocated in Aichi Vision 2030, which was formulated by the prefecture in November 2020.

Effective Period of the Plan

The effective period of the Plan is five years from FY2023 to FY2027.

Changes in the Number of Foreign Residents

As of the end of December 2021, the number of foreign residents in Aichi Prefecture was 265,199, the second largest in Japan after Tokyo, and accounting for approximately 3.5% of the prefecture’s total population. By nationality, Brazil continues to rank highest with 59,300. In recent years, the percentage of Asian countries, such as Vietnam and the Philippines, has been increasing.



Source: Ministry of Justice “Statistics on Foreign National Residents” as of the end of December each year; Aichi Prefecture “Population of Aichi” as of January 1 each year

■ Details ■

《Fundamental Objective of the Plan》

Achievement of affluent, vigorous regional development through the creation of a multicultural coexistence society

By promoting the creation of a multicultural coexistence society, an environment will be developed in which the human rights of all prefectural residents are respected regardless of nationality, ethnicity, or other differences, and in which every prefectural resident, as a leader of the local community, can fully demonstrate their individual abilities while proactively participating and playing an active role in various community activities. Moreover, a large number of excellent human resources are expected to be active in a wide range of fields. Efforts to establish themselves in local communities will serve as a source of regional vitality.

* Definition of “a multicultural coexistence society”

“A multicultural coexistence society” used in this Plan refers to a society in which the prefectural residents of different nationalities and ethnicities acknowledge each other’s cultural differences and differences in ways of thinking, live together in peace and comfort, and play an active social role as community members.

《Policy System》

To achieve the fundamental objective, policies to promote multicultural coexistence will be implemented based on the policy system with the following four pillars.

I Support for communication

Aichi Prefecture will promote Japanese language education so that everyone can live together and play an active social role without language barriers in a safe and secure environment. The prefecture will also promote multilingual support, including “Easy Japanese,” so that foreign residents can obtain necessary information.

II Support for living

Aichi Prefecture will enhance support for all aspects of life, such as by improving consultation systems and providing continued support tailored to each lifecycle stage. The prefecture will also develop systems related to disaster risk reduction, medical care, etc. to prepare for risks in daily life.

III Awareness-raising and support for social involvement

Aichi Prefecture will work to enhance education, promote awareness-raising, and improve consultation systems so that foreign and Japanese residents can understand each other’s cultural backgrounds and lifestyles, and eliminate prejudice and discrimination. The prefecture will also create an environment in which foreign residents can participate proactively as members of the local community.

IV Promotion of regional revitalization and globalization

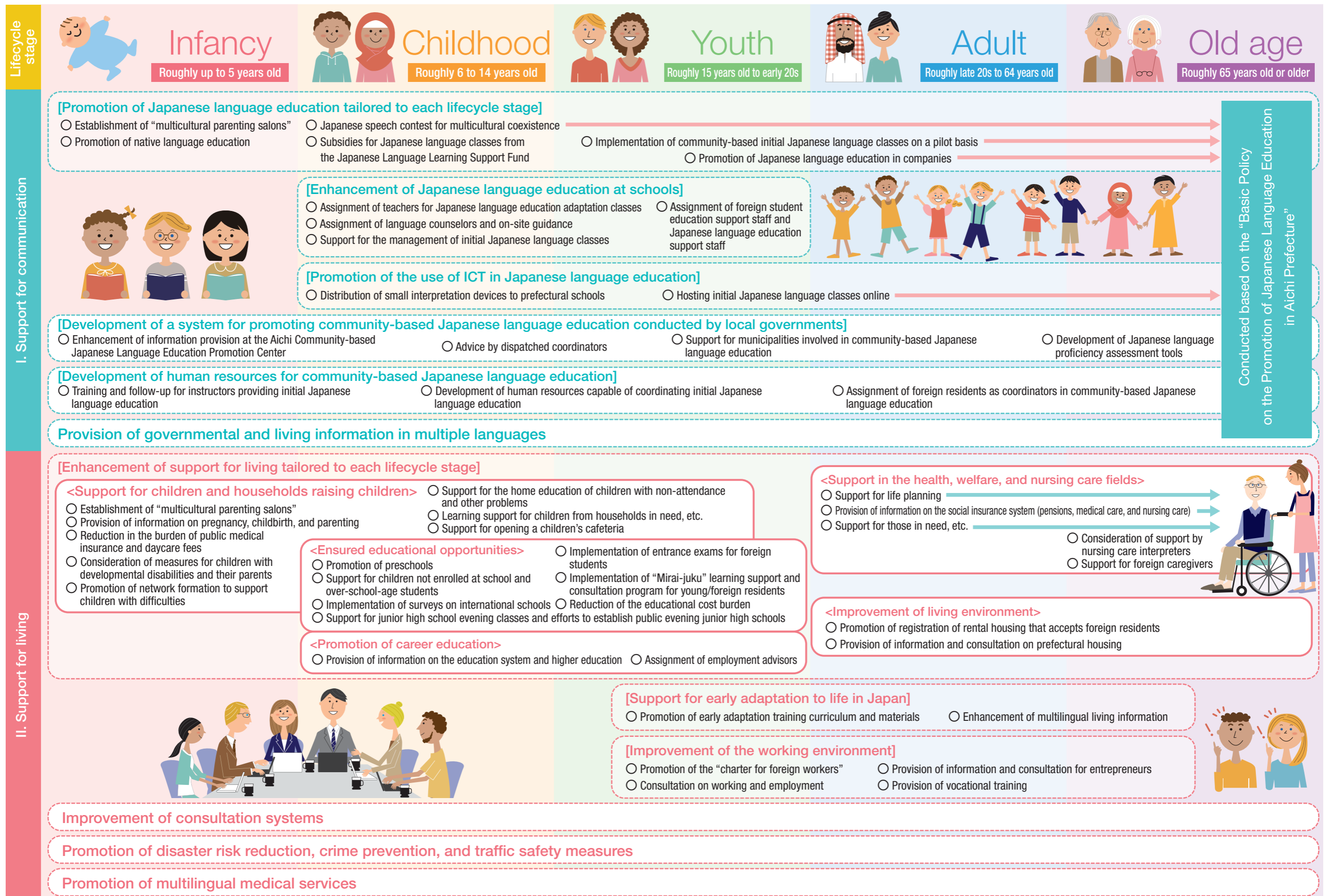
Aichi Prefecture will promote regional revitalization and globalization through cooperation and collaboration between foreign residents and Japanese residents, making use of the perspectives and diversity of foreign residents.

《Policy System》

Primary item	Secondary item	Tertiary item
I Support for communication	1. Promotion of Japanese language education	◎① Development of a system for promoting community-based Japanese language education conducted by local governments
		◎② Development of human resources for community-based Japanese language education
		③ Promotion of Japanese language education tailored to each lifecycle stage <ul style="list-style-type: none"> • Establishment of “multicultural parenting salons” (infancy) • Promotion of native language education (infancy) • Subsidies from the Japanese Language Learning Support Fund (childhood) • Promotion of initial Japanese language education (youth, adult, etc.) • Japanese speech contest for multicultural coexistence (all generations), etc.
		④ Enhancement of Japanese language education at schools
		⑤ Promotion of the use of ICT in Japanese language education
	2. Provision of governmental and living information in multiple languages	◎① Promotion of multilingual support using ICT
II Support for living	1. Improvement of consultation systems	① Enhancement of multilingual consultation and support systems
		② Development of consultation systems using ICT
	2. Enhancement of support for living	◎① Enhancement of support for living tailored to each lifecycle stage <ul style="list-style-type: none"> • Support for children and households raising children (infancy, childhood, etc.) • Ensured educational opportunities (childhood, youth, etc.) • Promotion of career education (childhood, youth, etc.) • Improvement of living environment (adult, etc.) • Support in the health, welfare, and nursing care fields (old age, etc.)
		◎② Support for early adaptation to life in Japan
		◎③ Improvement of the working environment
	3. Promotion of disaster risk reduction, crime prevention, and traffic safety measures	◎① Improvement of the operation of the Aichi Prefecture Multilingual Disaster Support Center
		◎② Enhancement of education for disaster risk reduction and emergency drills
		③ Promotion of crime prevention and traffic safety education
	4. Promotion of multilingual medical services	◎① Improvement and promotion of the Aichi Medical Interpretation System
		② Provision of multilingual information on medical care
		③ Provision of multilingual information and consultation on infectious diseases
	III Awareness-raising and support for social involvement	1. Awareness-raising throughout the prefecture
② Creation of a society that respects diversity		
2. Promotion of interaction in local communities		◎① Promotion of interaction and mutual understanding in local communities
		② Promotion of involvement of foreign residents in local communities
IV Promotion of regional revitalization and globalization	1. Promotion of regional revitalization and globalization through cooperation and collaboration with foreign residents	① Promotion of regional revitalization through cooperation and collaboration with foreign residents
		② Promotion of the active social involvement of global human resources
		◎③ Promotion of the active social involvement of international students

◎: Items related to the course of action for priority initiatives

Lifecycle Diagram This diagram shows major policies related to the primary items of the policy system, “I. Support for communication” and “II. Support for living,” along the lifecycle stages.



The primary items of the policy system, “III. Awareness-raising and support for social involvement” and “IV. Promotion of regional revitalization and globalization” will be implemented as common efforts for all stages in the lifecycle.

《Course of Action for Priority Initiatives》

① Enhancement of systems to support safe and secure living

- Promotion of multilingual support using ICT (provision of multilingual information and consultation, etc.)
- Enhancement of support for living tailored to each lifecycle stage (support for households raising children, ensured educational opportunities, support in the health, welfare, and nursing care fields, etc.)
- Improvement of the operation of the Aichi Prefecture Multilingual Disaster Support Center (provision of multilingual information during disasters, etc.)
- Enhancement of education for disaster risk reduction and emergency drills (sharing knowledge on disaster risk reduction in multiple languages, etc.)
- Improvement and promotion of the Aichi Medical Interpretation System (promotion of registration by medical institutions, etc.)

② Creation of sustainable community-based Japanese language education promotion systems

- Development of a system for promoting community-based Japanese language education conducted by local governments (promotion of initiatives led by municipalities, etc.)
- Development of human resources for community-based Japanese language education (initial Japanese language instructor training course, etc.)

③ Promotion of the active social involvement of foreign residents

- Support for early adaptation to life in Japan (promotion of early adaptation training at companies, etc.)
- Improvement of the working environment (provision of information and consultation for employment and entrepreneurship, etc.)
- Promotion of the active social involvement of international students (encouraging employment at Aichi-based companies, etc.)

④ Promotion of understanding of multicultural coexistence

- Provision of opportunities to promote understanding of multicultural coexistence (multicultural coexistence forums, etc.)
- Promotion of interaction and mutual understanding in local communities (events, publicizing cooperation, etc.)

《Evaluation Index》

Primary item	Index	Current status	Target
I Support for communication	Number of municipalities involved in initial Japanese language education	8	20
	Number of trainees who completed the initial Japanese language instructor training course	88	300
	Number of visits to the one-stop portal site that provides governmental and living information in multiple languages	Not opened	1,300,000 per year
II Support for living	Number of areas with multicultural parenting salons	15	25
	Number of municipalities working to promote understanding of the social insurance system (pensions, medical care, and nursing care) among foreign residents	41	54
	Number of municipalities working to be ready to receive foreign residents at evacuation centers	22	54
	Number of medical institutions registered with the medical interpretation system	157	200
III Awareness-raising and support for social involvement	Percentage of Japanese residents who think favorably about having a large number of foreign residents in the prefecture	48% (*)	60%
	Number of community exchange events for which information is provided through the one-stop portal site that provides governmental and living information in multiple languages	Not conducted	100 per year
IV Promotion of regional revitalization and globalization	Number of international students who changed their status of residence for the purpose of employment in the prefecture	1,196	1,600

* Percentage of respondents who selected any of the three options that contained the term “desirable” out of 1,590 respondents to the second prefectural public opinion survey in FY2021 regarding their awareness of having a large number of foreign residents in the prefecture



December 2022

Multicultural Society Section, Social Activities Promotion Division, Community Affairs Department,
Bureau of Community and Cultural Affairs, Aichi Prefecture

3-1-2 Sannomaru, Naka-ku, Nagoya City, Aichi 460-8501

Phone: 052-954-6138 (direct) Fax: 052-971-8736 Email: tabunka@pref.aichi.lg.jp

<https://www.pref.aichi.jp/soshiki/tabunka/>



Aichi Prefecture
Multicultural symbol mark



Aichi Multicultural
Coexistence Net