

## About the Aichi-Nagoya War Museum

The Aichi-Nagoya War Museum exhibits authentic war-related materials donated by the residents of the prefecture, passing on the experience of the war to the next generation, and learning about the lessons left behind by the war and the importance of peace. It aims to nurture a rich spirit of peace and contribute to the development of a peaceful society.

### ◎ About the donated materials

The museum exhibits actual materials donated by residents of the prefecture. Please contact the Aichi-Nagoya War Museum if you would like to discuss donations.

### ◎ Miscellaneous

The Aichi-Nagoya War Museum holds numerous events, including special summer vacation programs. Details will be posted on the "Event Information" page of the website as needed, so please check it.

## About the Aichi Prefectural Office Otsubashi Annex

The Otsubashi Annex of the Aichi Prefectural Office, a reinforced concrete three-story building with one basement floor, was designed by Miki Kurokawa (father of Kisho Kurokawa), Kojiro Tsuchida and others, and was built in 1933.

By arranging stairs to the front-right, the entire building is asymmetrical, and expressionist design is used.

The exterior walls of the first floor are covered with stone, and the second floor and above are covered with scratch tiles, and the ceiling of the first floor is decorated with elaborate plaster decorations.

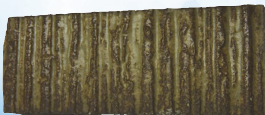
It was built by the Aichi Prefectural Credit Cooperative Association and donated to Aichi Prefecture by the Aichi Prefectural Agro-Forestry Hall in 1957.



《Terracotta》 Decorated with torches and other designs.

### 《Scratch Tiles》

The tiles with a scratchy pattern were popular in the early Showa period (1926-1945).



## Information

**Opening Hour** 10:00 a.m. to 4:00 p.m.

**Closed on**

Mondays and Tuesdays (open on national holidays but closed on the following weekday), End of Year and New Year holidays, as well as other temporary closures due to changes in exhibitions.

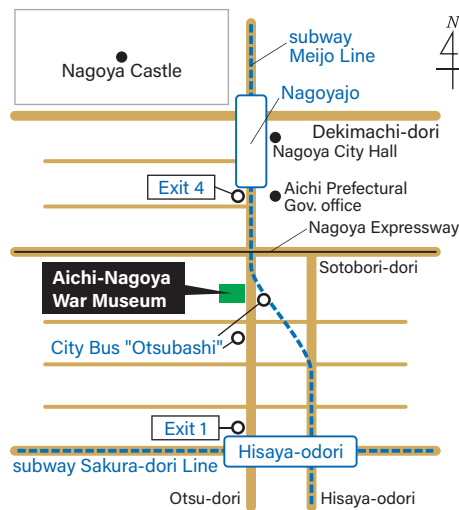
\*Please consult with us regarding the use during closed days.

**Location**

The first floor of the Otsubashi Annex of the Aichi Prefectural Office

**Admission**

Free



### 《Traffic Information》

- It's around a 5-minute walk south from Exit 4 of Nagoya-jō (Nagoya Castle) Station on the subway Meijo Line
- It's around an 8-minute walk north from Exit 1 of Hisaya-odori Station on the subway Sakura-dori and Meijo Lines
- It's around a 1 minute walk from the City Bus "Otsubashi"

\*Please use public transportation as there is no parking lot.



## Aichi-Nagoya War Museum

**Inquiry**

Address: 4-13, Marunouchi 3-Chome, Naka Ward, Nagoya City 460-0002  
The first floor of the Otsubashi Annex of the Aichi Prefectural Office  
Tel: (052) 957-3090, Fax: (052) 957-3091  
e-mail : an-shiryokan@ark.ocn.ne.jp

**Homepage**

<https://www.pref.aichi.jp/kenmin-soumu/chosakai/>



The Aichi-Nagoya War Museum is run by the Council for the Operation of the Museum on War that is jointly established by Aichi Prefecture and Nagoya City



## Aichi-Nagoya War Museum



Aichi Prefectural Office Otsubashi Annex



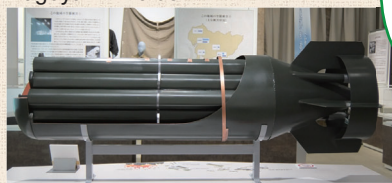


In the exhibition room, there is an exhibition section with an emphasis on regional characteristics centered on the War Experience of the Residents and the Regional History related to the War, and it is an exhibition where visitors can think about peace and war by themselves through materials.

\*Please note that the exhibition may change depending on the contents of the special exhibition.

## 1 Regional History related to the War

In this section, materials on events that occurred in this area, such as pre-war urbanization and industrialization, and trends during the war, are displayed, focusing on the Nagoya Air Raids.



E46 clustered incendiary bomb (a replica)

In this section, you can see a replica of the E46 clustered incendiary bomb and computer graphics of the Nagoya Air Raids.

## 2 The War Experience of the Residents (Life in war years)

In this section, materials that tell living of residents of the prefecture and school education in this area under the war-time regime are displayed. We explore the impact of the war on people's lives.

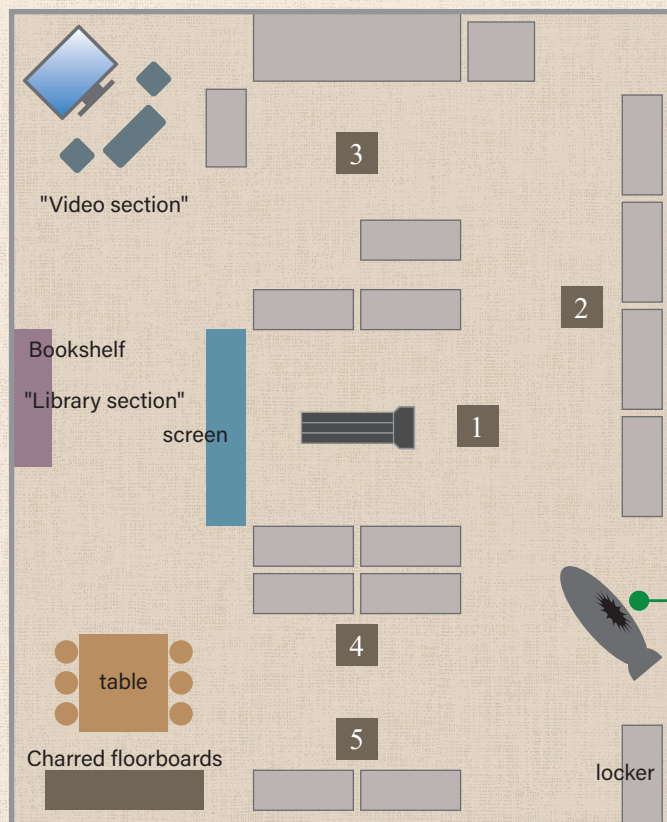


## 3 The War experiences of the Residents II (Military and battlefields)

In this section, materials associated with army life and battlefield experiences of the residents of the prefecture are displayed. Learn what it was like to join the army and stand on the battlefield for people at the time.



## Information on the Aichi-Nagoya War Museum



You can learn!

### "Library section"

Books on war, picture books for children, and topographies of Aichi Prefecture. You can freely read the book in the exhibition room.



### "Video section"

In this section, we are showing video volumes of the war experience "Grassroots storytellers". You can also watch DVD's aside from the current video. Please ask the staff for details.

### "Grassroots storytellers"

This video series was created by the Council for the Operation of the Museum on War, and contains stories about those who experienced the war.



## 4 Regional History after World War II

In this section, materials on postwar reform, demobilization from the battlefields, and reconstruction and urban development are displayed. We will introduce the state of the area following the end of the war and the changes which happened in the city of Nagoya.



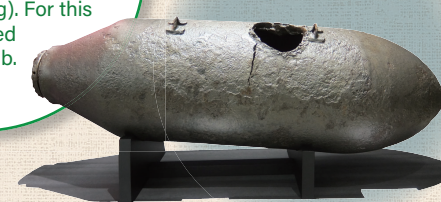
## 5 Special exhibits

In this section, we regularly hold special exhibitions on various themes related to the war.



### 250 kg bomb

A bomb discovered at the construction site of the South Police Station in 1997. When loaded with gunpowder, it weighed 492 pounds (221.4 kg). For this reason, it is called the 250 kg bomb.



### Group tours

The museum accepts groups of 5 or more. If you apply in advance, the museum staff can explain the exhibits.

### Rental of the War Experience Video

With the cooperation of those who have experienced the war, a war experience video (DVD) is produced and lent out as a valuable resource for the residents of the prefecture who have never experienced war to realize the misery of war and the importance of peace.

\* For more information, please visit our website or contact us.