

## Observation Points

### 1. Landforms and Geology Supporting Biodiversity

- 1a Observations from Triangulation Station
- 1h Sandy Gravel Regions and Vegetation
- 1c Granite Regions and Vegetation

### 2. Life in the Forest

- 2a Flying Squirrel
- 2h Man-made Forest working with industry
- 2c Man-made Forest by NPO Civic Society for Conservation of Kaisho Forest
- 2d Wild Bird Forest
- 2e Special Protected Area in Northeastern Yotsuzawa

### 3. Wetland Diversity

- 3a Nutrient-poor Wetland
- 3h Star Magnolia in the Small Wetland
- 3c Wet Meadow of the Shinoda Pond

### 4. Waterside Life

- 4a Life of the Kaisho Pond
- 4b Life of the Yoshida River
- 4c Japanese Eight-barbel Loach
- 4d Tago's Brown Frog

### 5. Restoring Fields

- 5a Restoration of Paddy Fields
- 5h Restoration of Reservoirs
- 5c Fields of Village Classroom

### 2e Special Protected Area in Northeastern Yotsuzawa



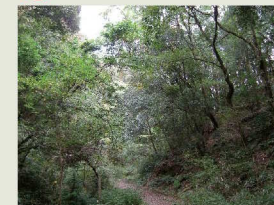
Cutting of undergrowth and other activities are conducted to preserve the rare *Viola virginata* that grow in this area.

### 4d Tago's Brown Frog



Tago's brown frogs (*Rana tago*) live near watersides in mountain regions.

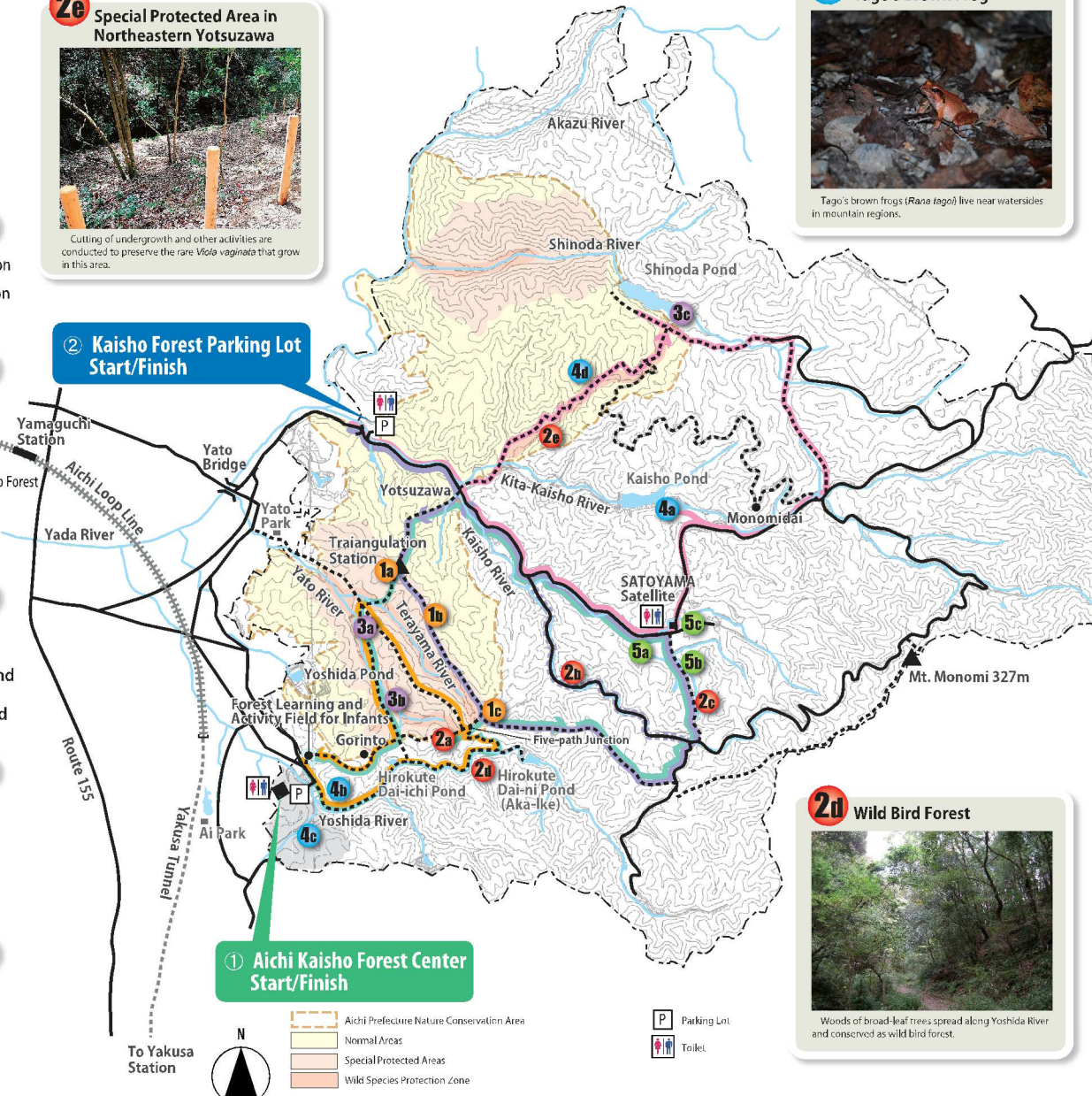
### 2d Wild Bird Forest



Woods of broad-leaf trees spread along Yoshida River and conserved as wild bird forest.

### 2 Kaisho Forest Parking Lot Start/Finish

### 1 Aichi Kaisho Forest Center Start/Finish



# Nature Walk MAP

