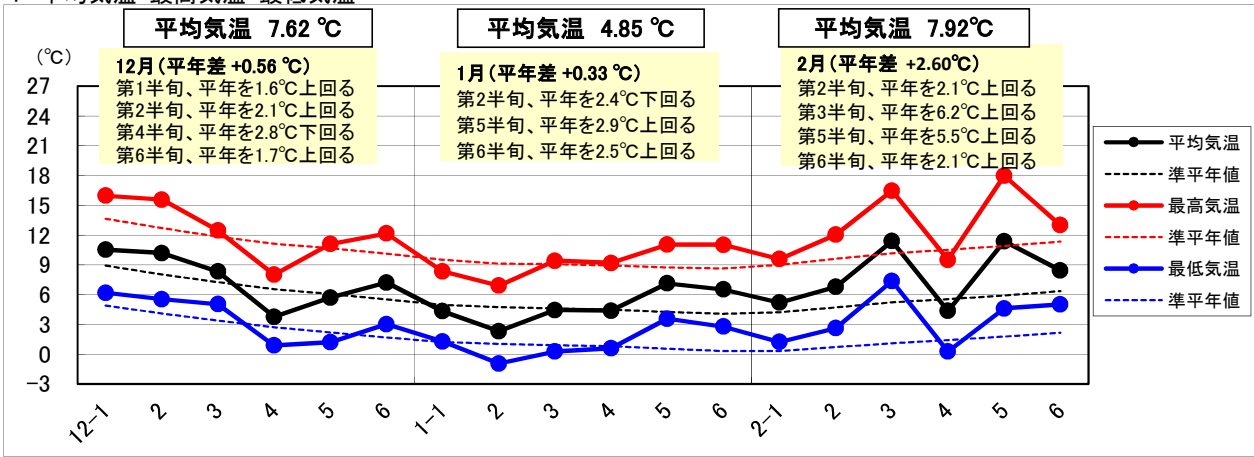
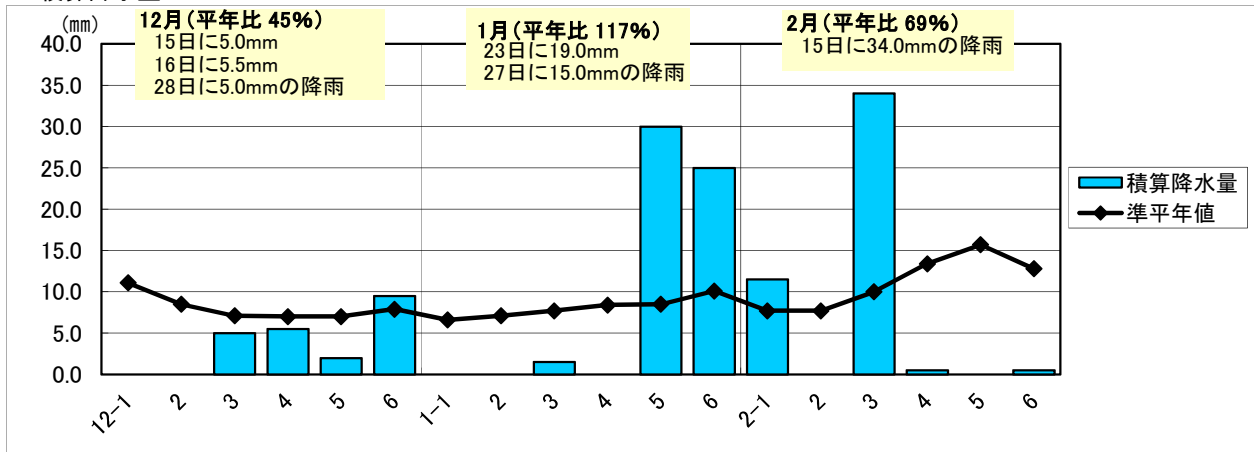


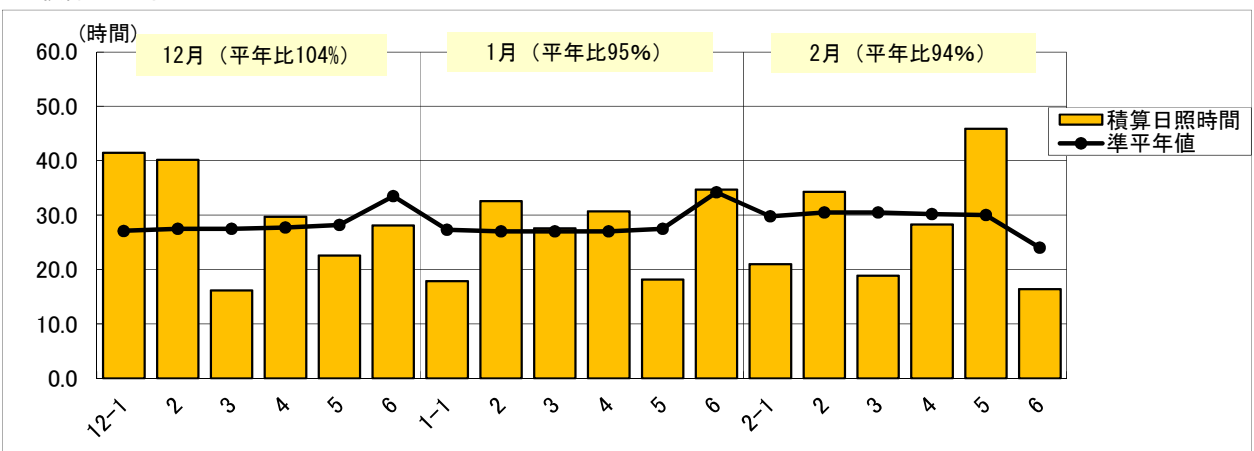
1 平均気温・最高気温・最低気温



2 積算降水量



3 積算日照時間



日付	平均気温	準平年値	(平年差)	最高気温	準平年値	(平年差)	最低気温	準平年値	(平年差)	積算降水量	準平年値	(平年比)	積算日照時間	準平年値	(平年比)
12-1	10.5	8.9	1.6	16.0	13.6	2.3	6.2	4.9	1.3	0.0	11.1	0%	41.5	27.1	153%
2	10.2	8.0	2.1	15.6	12.7	2.9	5.5	4.1	1.4	0.0	8.5	0%	40.2	27.5	146%
3	8.3	7.2	1.1	12.5	11.8	0.6	5.0	3.4	1.7	5.0	7.1	70%	16.2	27.5	59%
4	3.8	6.6	-2.8	8.0	11.1	-3.1	0.9	2.7	-1.8	5.5	7.0	79%	29.7	27.7	107%
5	5.7	6.1	-0.4	11.1	10.7	0.4	1.2	2.2	-1.0	2.0	7.0	29%	22.6	28.2	80%
6	7.2	5.5	1.7	12.2	10.1	2.0	3.0	1.7	1.4	9.5	7.9	120%	28.1	33.5	84%
1-1	4.3	5.0	-0.7	8.3	9.5	-1.2	1.3	1.2	0.0	0.0	6.6	0%	17.9	27.3	66%
2	2.3	4.7	-2.4	6.9	9.1	-2.2	-0.9	1.0	-2.0	0.0	7.1	0%	32.6	27.0	121%
3	4.4	4.6	-0.2	9.4	9.1	0.3	0.3	0.9	-0.7	1.5	7.7	19%	27.6	27.0	102%
4	4.4	4.5	-0.1	9.2	8.9	0.3	0.6	0.8	-0.2	0.0	8.4	0%	30.7	27.0	114%
5	7.1	4.3	2.9	11.0	8.7	2.3	3.6	0.6	3.0	30.0	8.5	353%	18.2	27.5	66%
6	6.5	4.1	2.5	11.0	8.6	2.4	2.8	0.3	2.5	25.0	10.1	248%	34.7	34.2	101%
2-1	5.2	4.2	1.0	9.6	9.0	0.6	1.2	0.3	0.9	11.5	7.7	149%	21.0	29.8	70%
2	6.8	4.7	2.1	12.0	9.6	2.4	2.6	0.7	1.9	0.0	7.7	0%	34.3	30.5	112%
3	11.4	5.2	6.2	16.5	10.2	6.3	7.4	1.1	6.3	34.0	10.0	340%	18.9	30.5	62%
4	4.4	5.5	-1.2	9.5	10.5	-1.0	0.3	1.4	-1.2	0.5	13.4	4%	28.3	30.2	94%
5	11.4	5.9	5.5	18.0	10.9	7.1	4.6	1.8	2.8	0.0	15.7	0%	45.9	30.0	153%
6	8.4	6.4	2.1	13.0	11.4	1.7	5.0	2.2	2.9	0.5	12.8	4%	16.4	24.0	68%