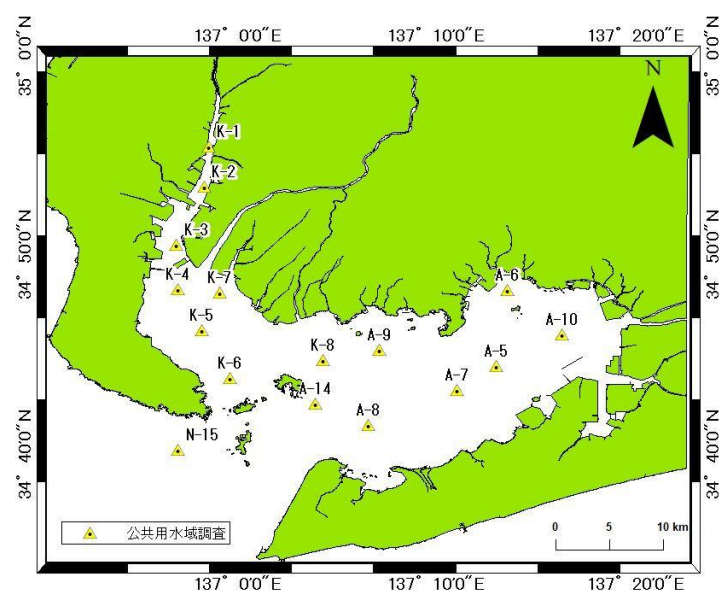


## 数値シミュレーションの現況再現結果

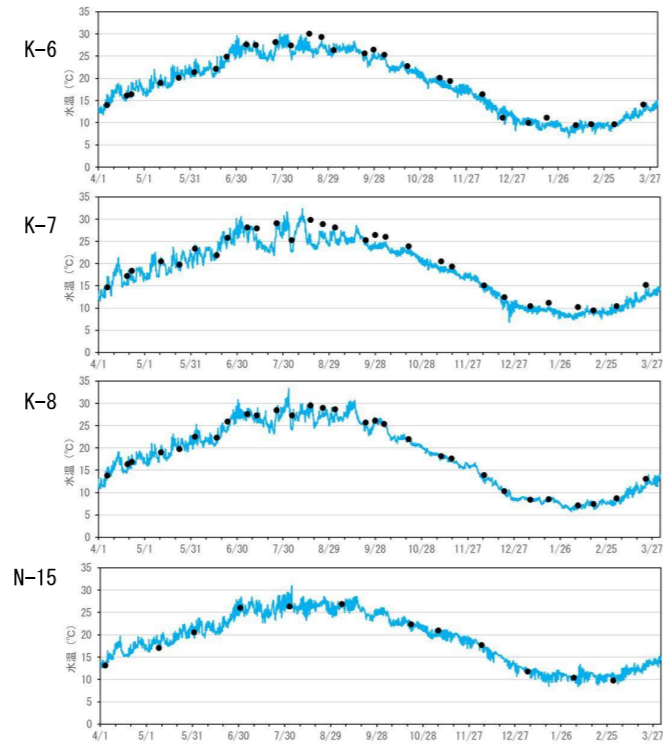
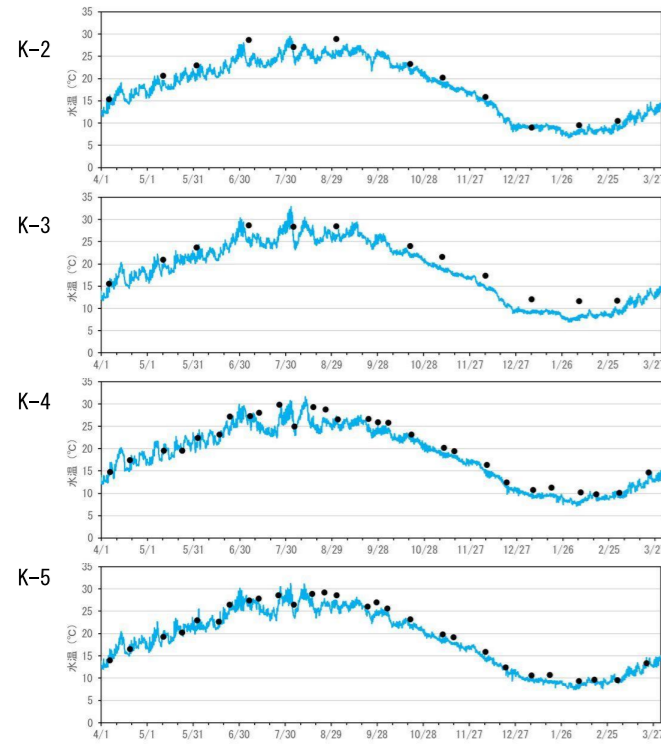
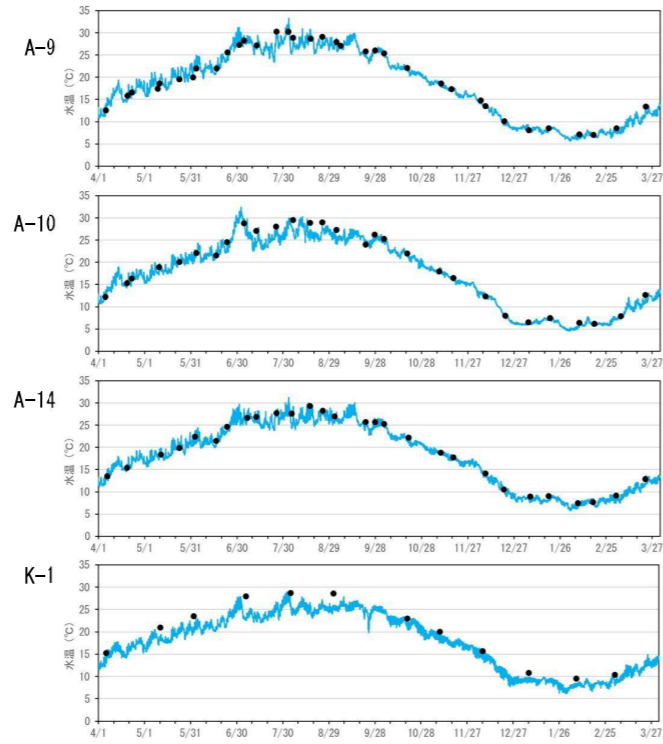
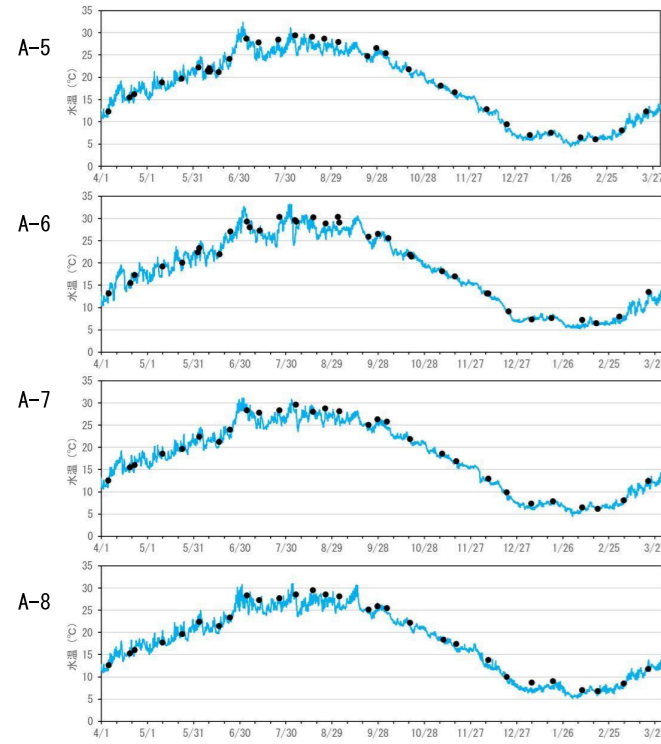
- 水質観測地点図
- 2022年度広域再現計算結果
  - ✓ 流況シミュレーション（水温・塩分）
  - ✓ 水質生態系シミュレーション（TN・NO<sub>3</sub>-N・NO<sub>2</sub>-N・NH<sub>4</sub>-N・TP・PO<sub>4</sub>-P・Chl. a）



水質観測地点（公共用水域調査）の位置  
2022年

表層

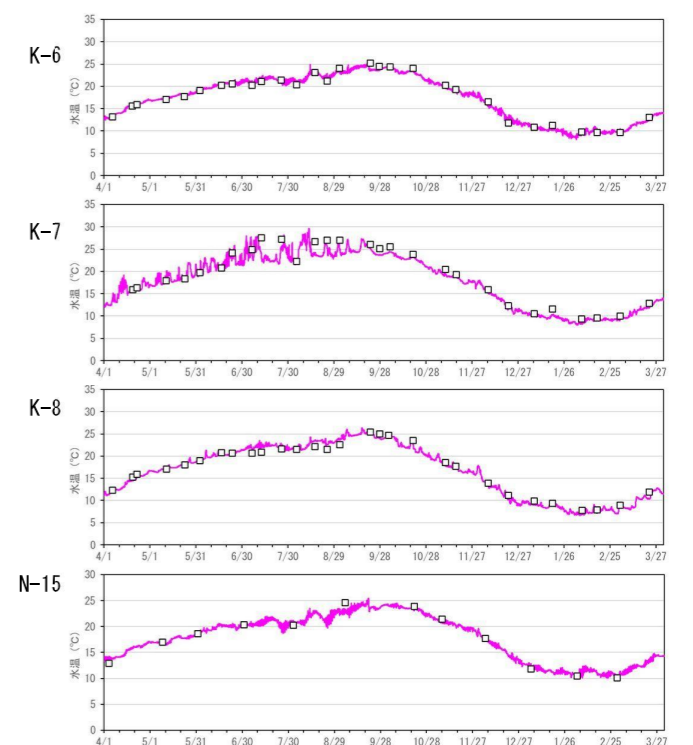
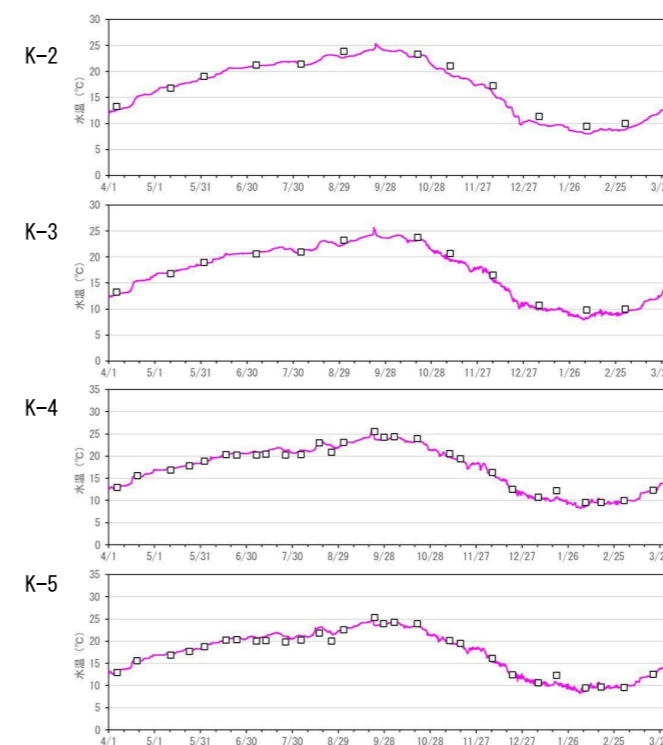
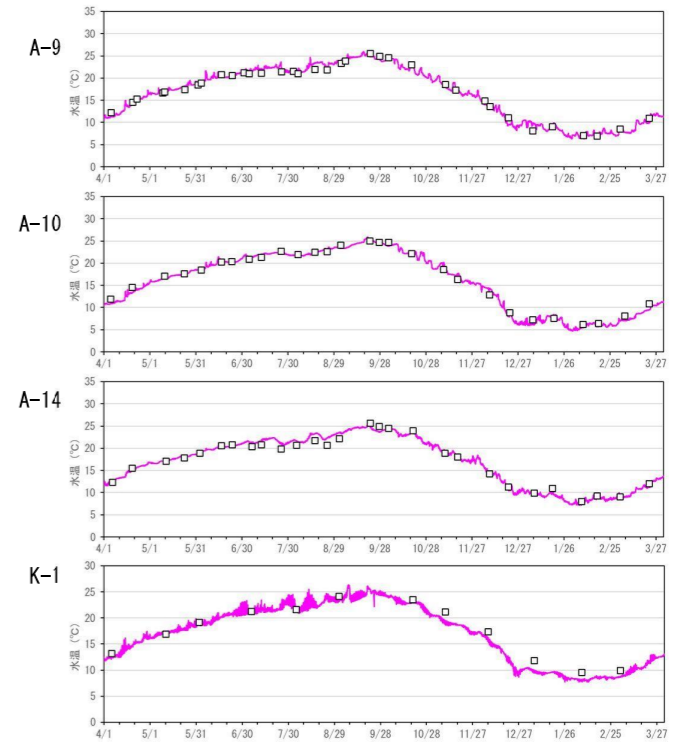
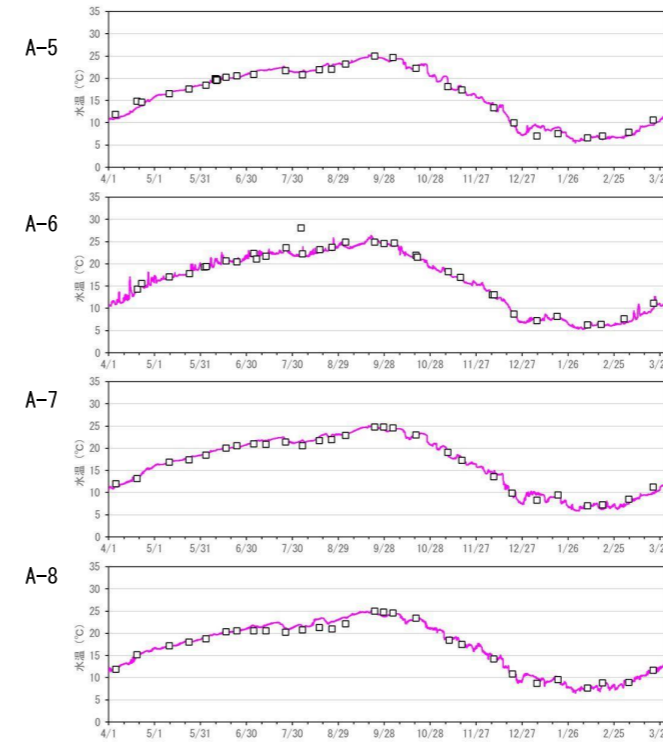
【水温】



● 観測(0m) — 計算(表層:海面~2m)

底層

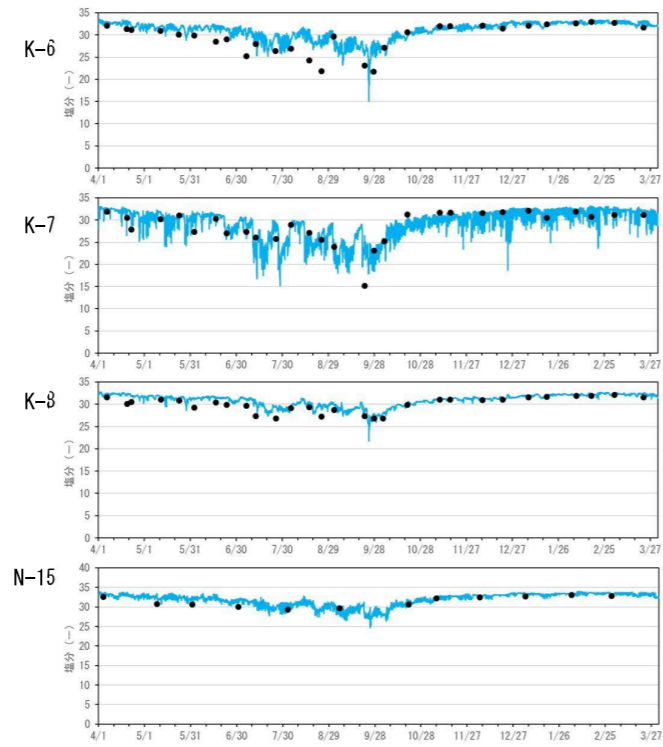
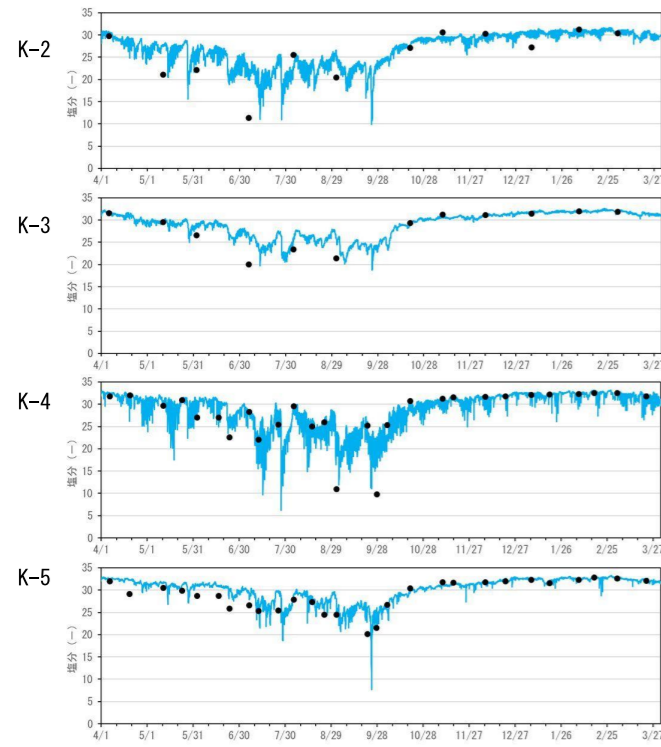
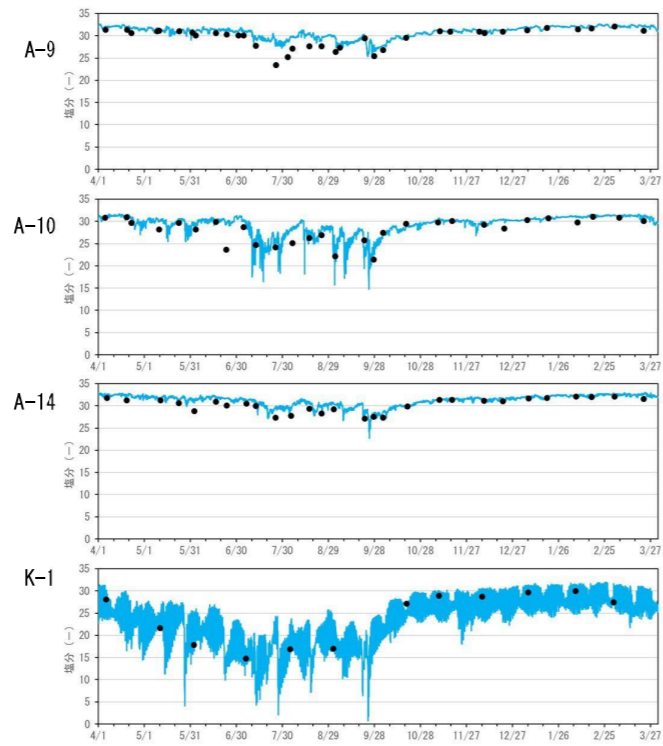
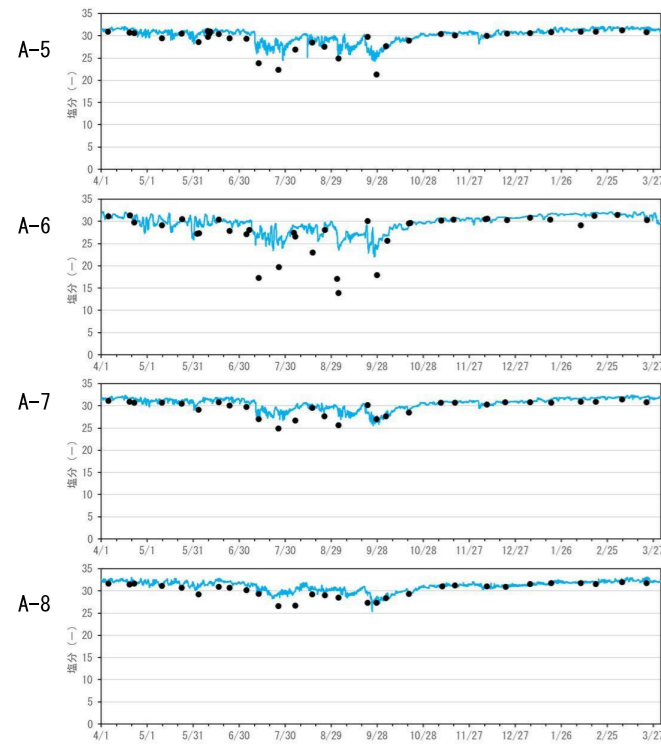
【水温】



□ 観測(B-1m) — 計算(海底直上層)

表層

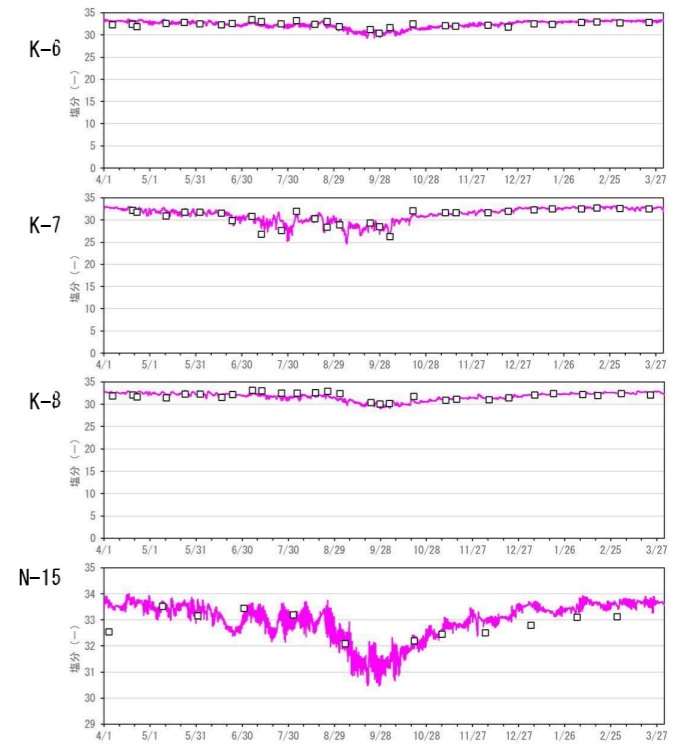
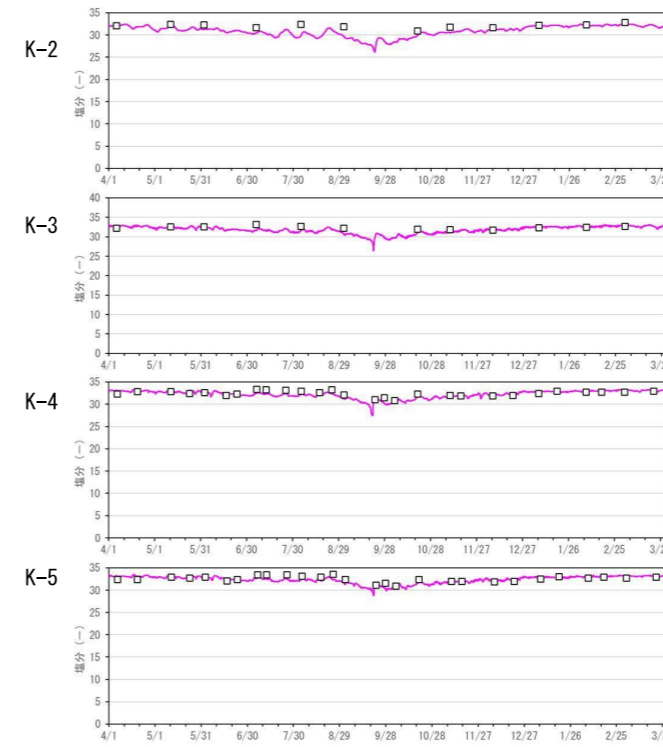
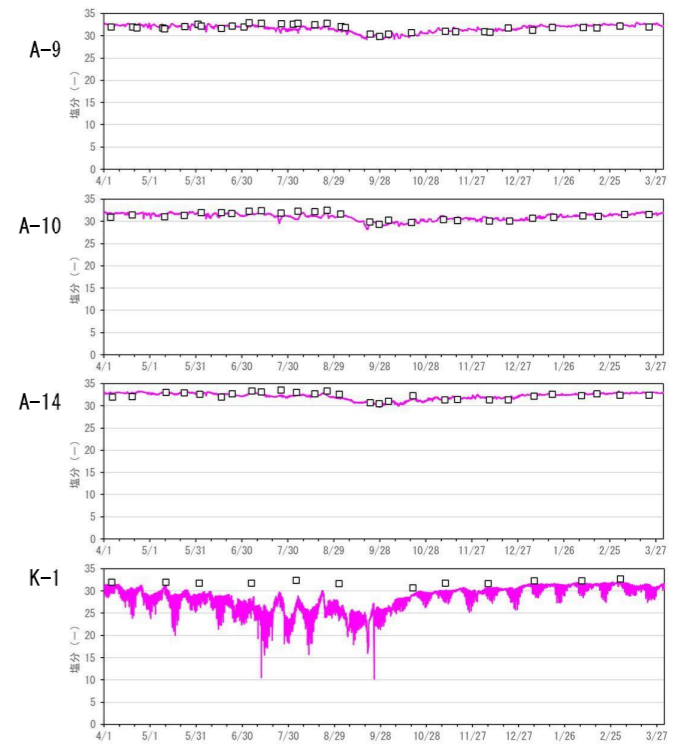
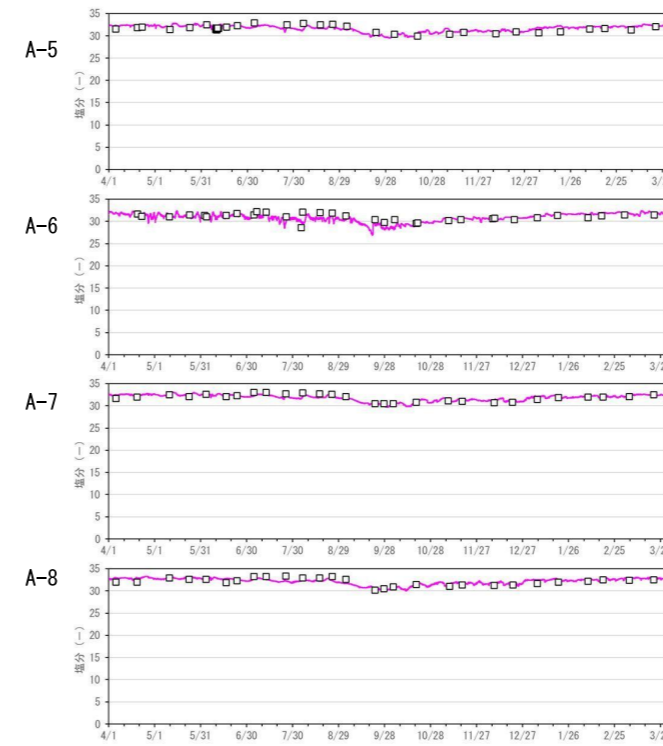
【塩分】



● 観測(0m)    — 計算(表層:海面~2m)

底層

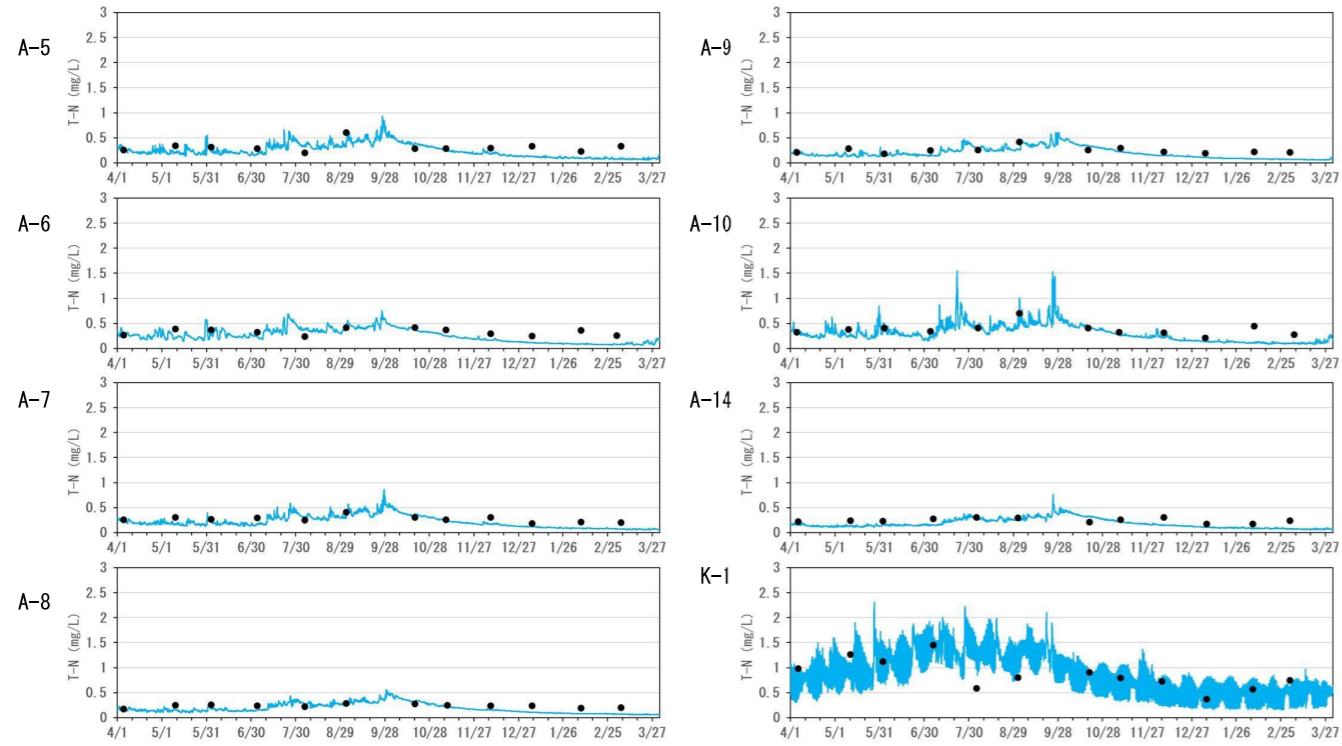
【塩分】



□ 観測(B-1m)    — 計算(海底直上層)

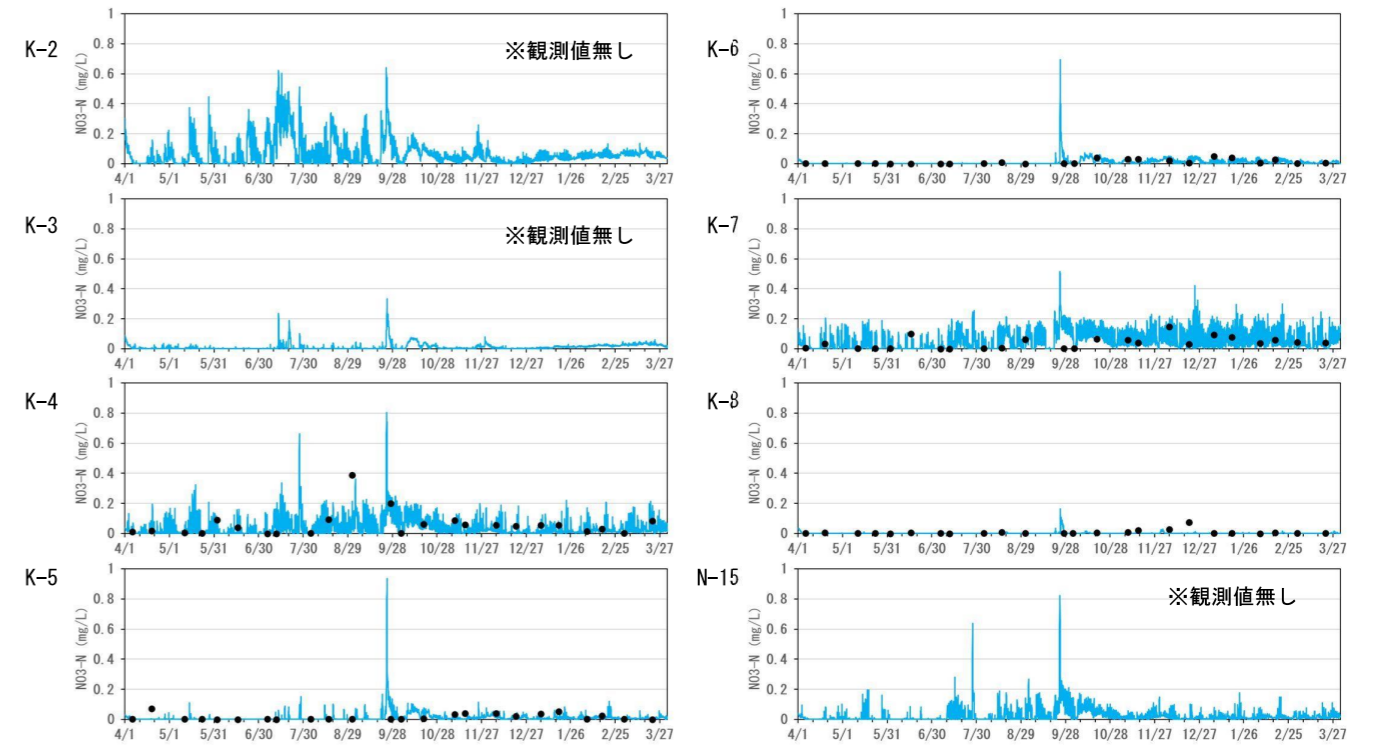
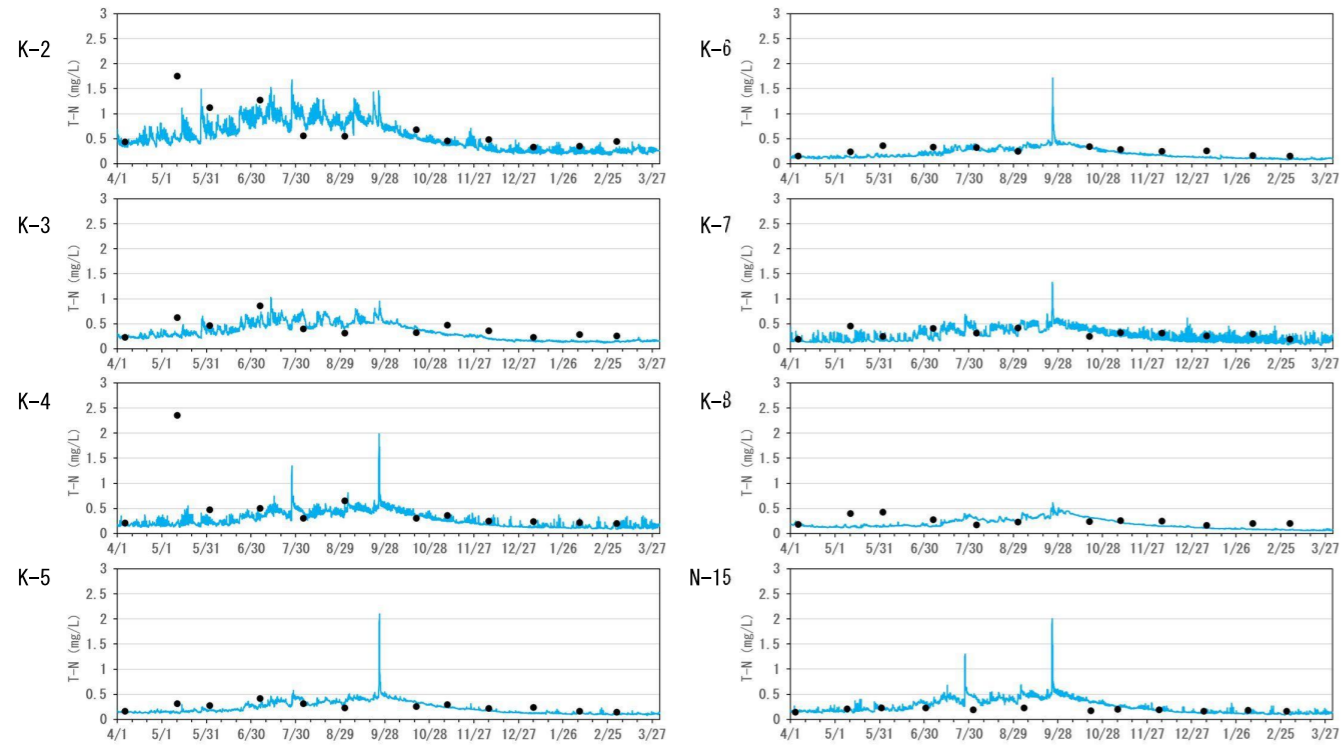
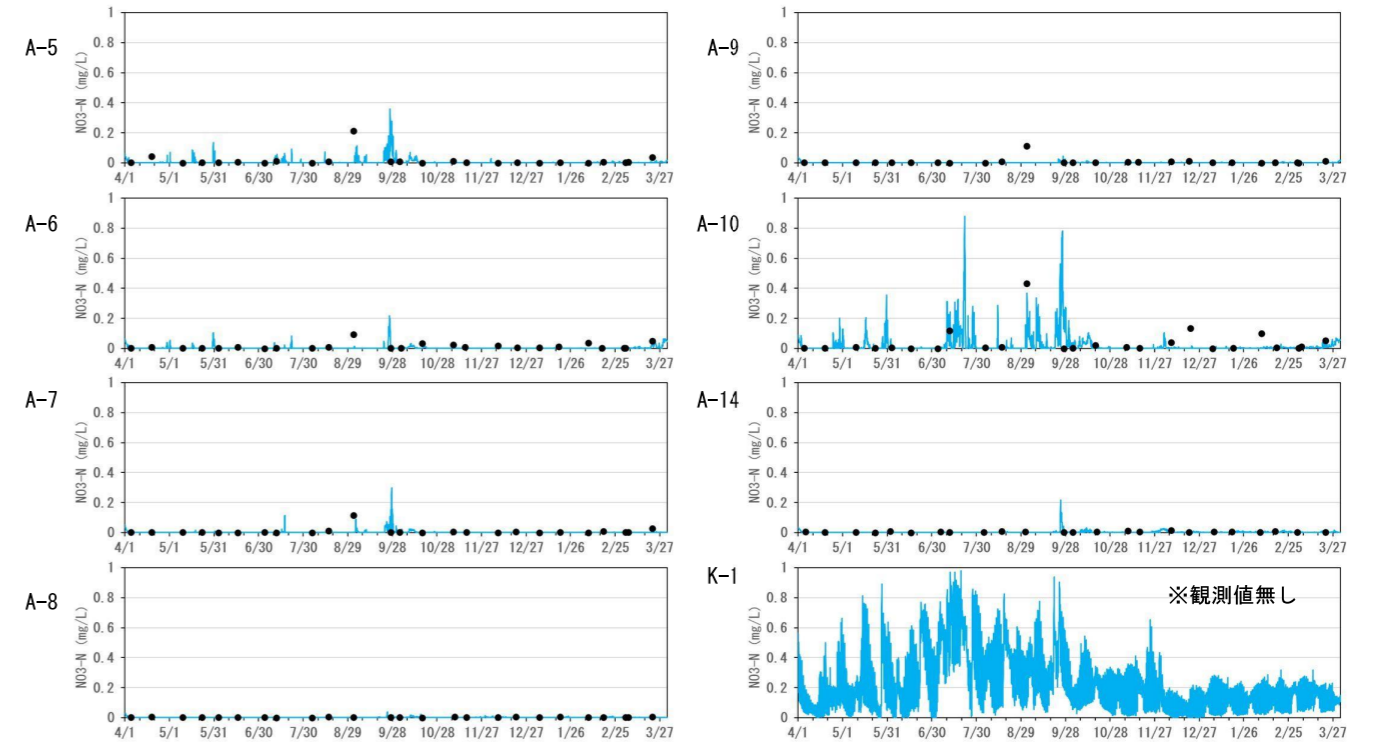
表層

【T-N】



表層

【NO<sub>3</sub>-N】

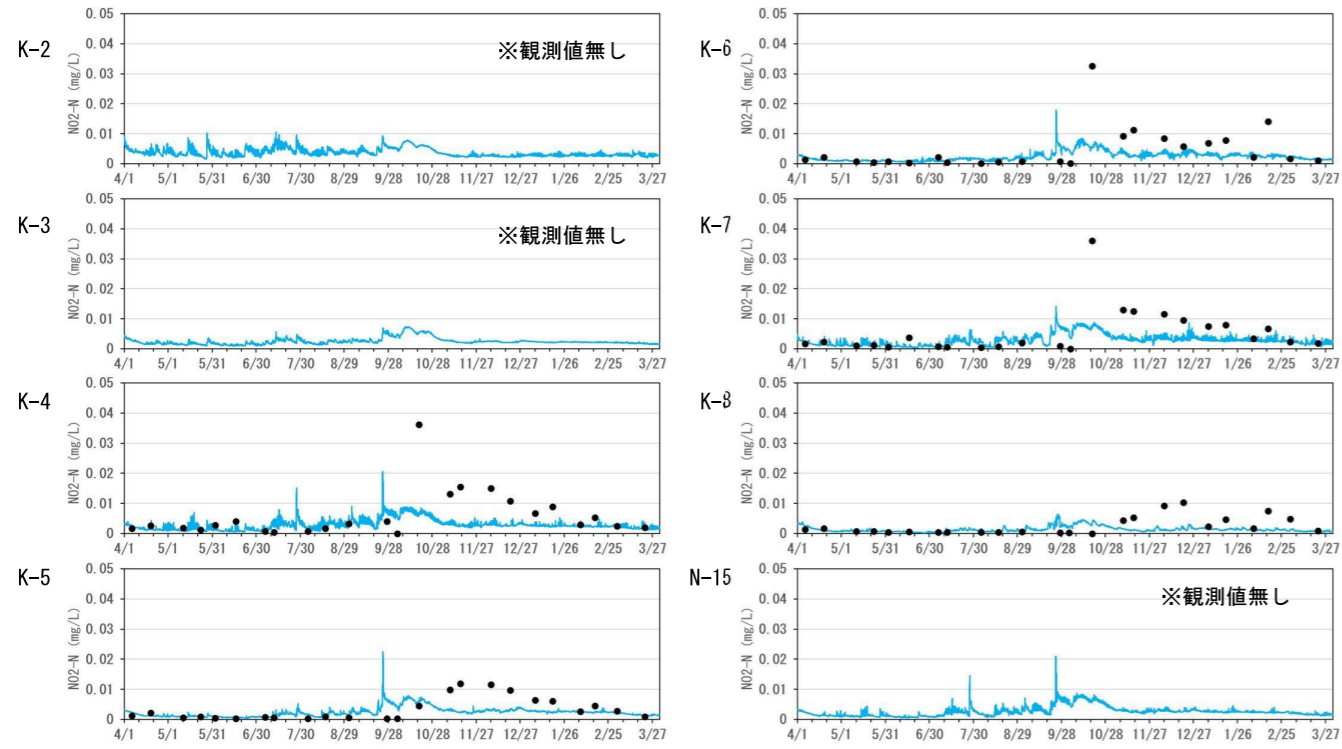
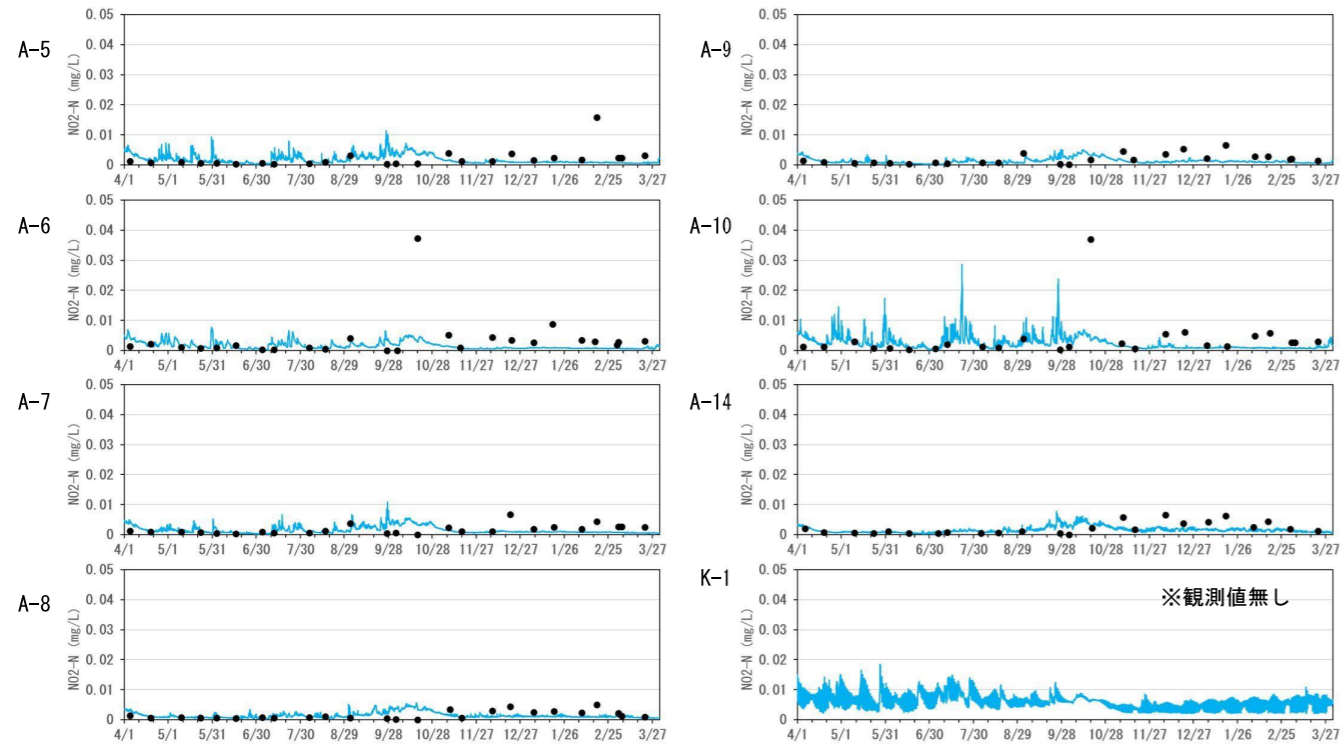


● 観測(0m) — 計算(表層:海面~2m)

● 観測(0m) — 計算(表層:海面~2m)

表層

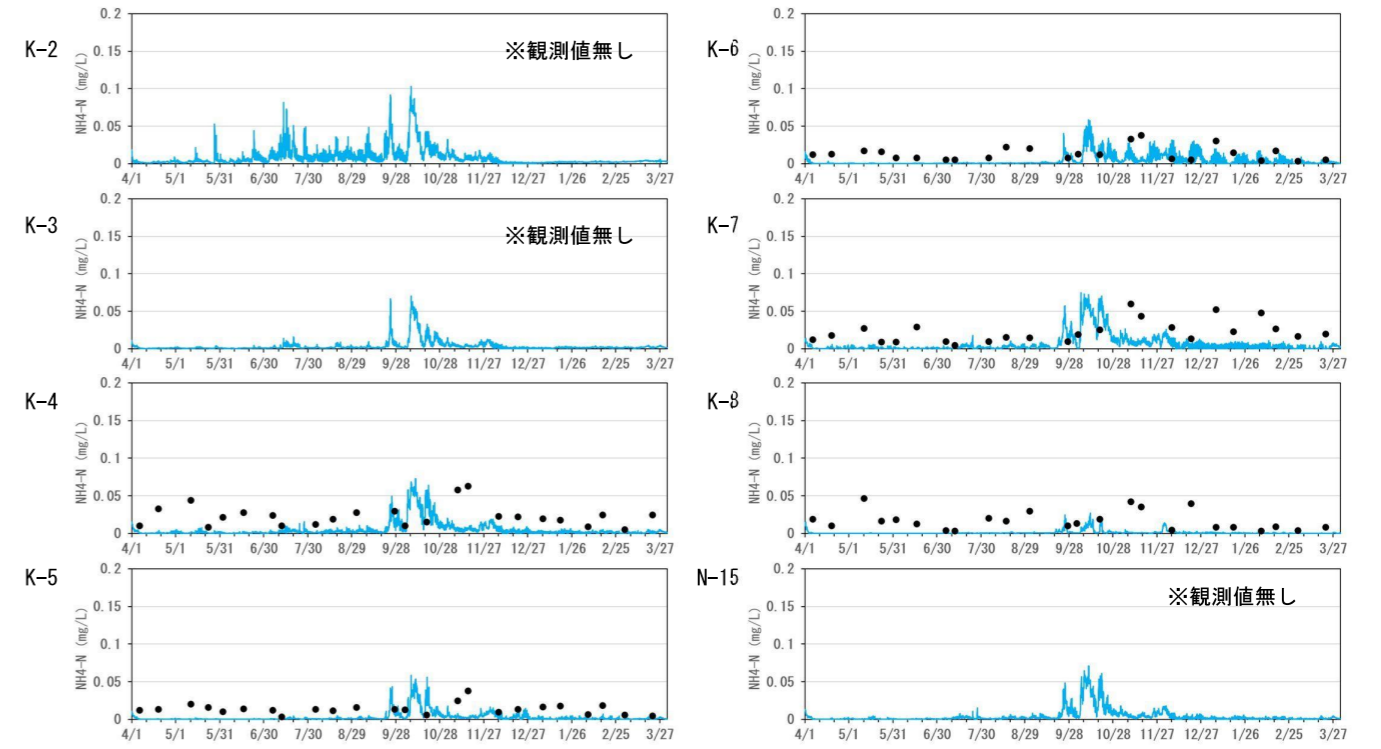
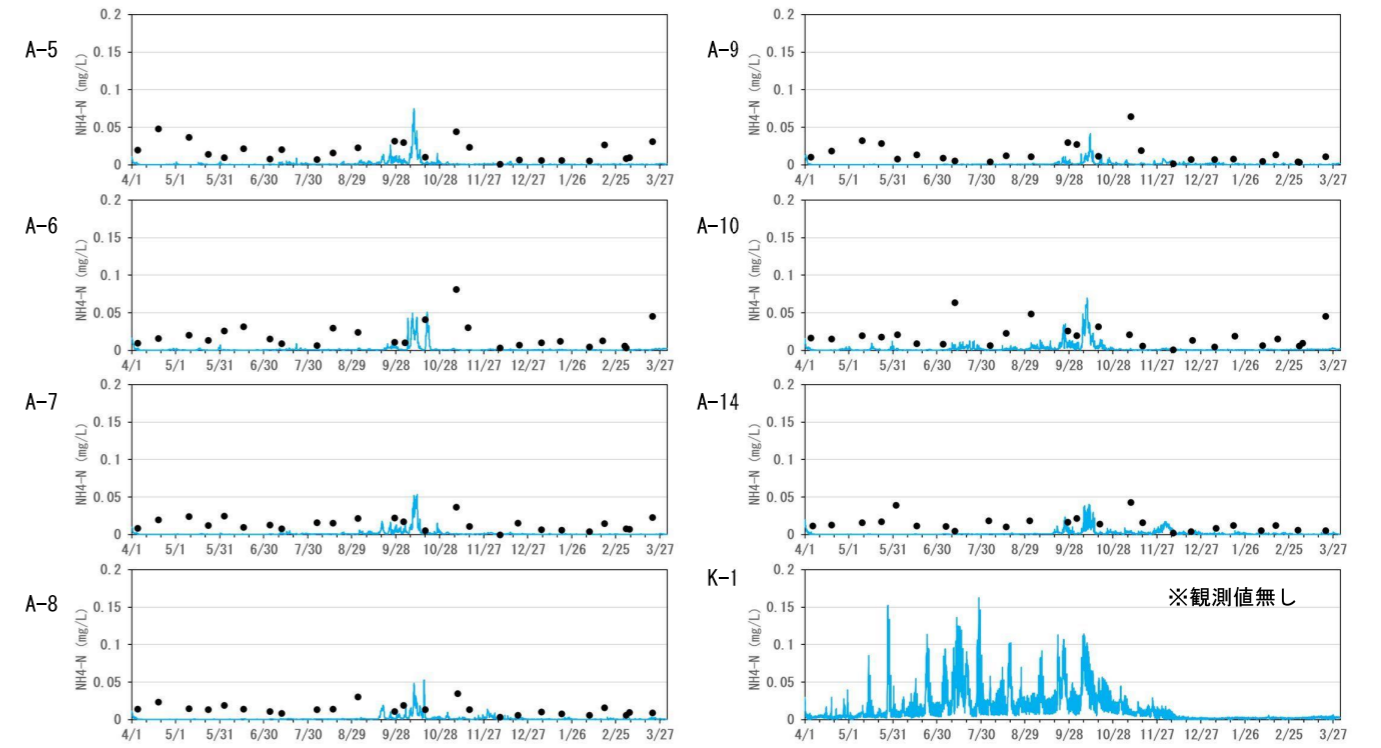
【NO<sub>2</sub>-N】



● 観測(0m) — 計算(表層:海面~2m)

表層

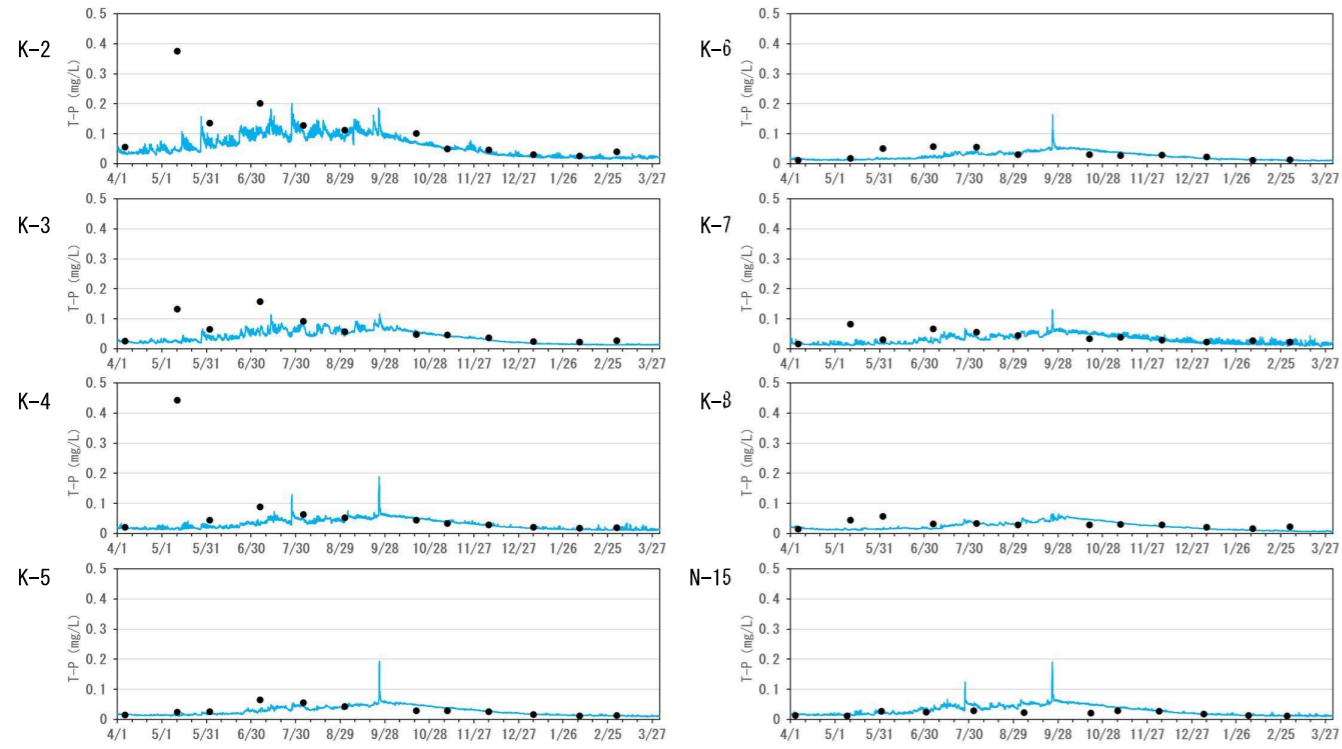
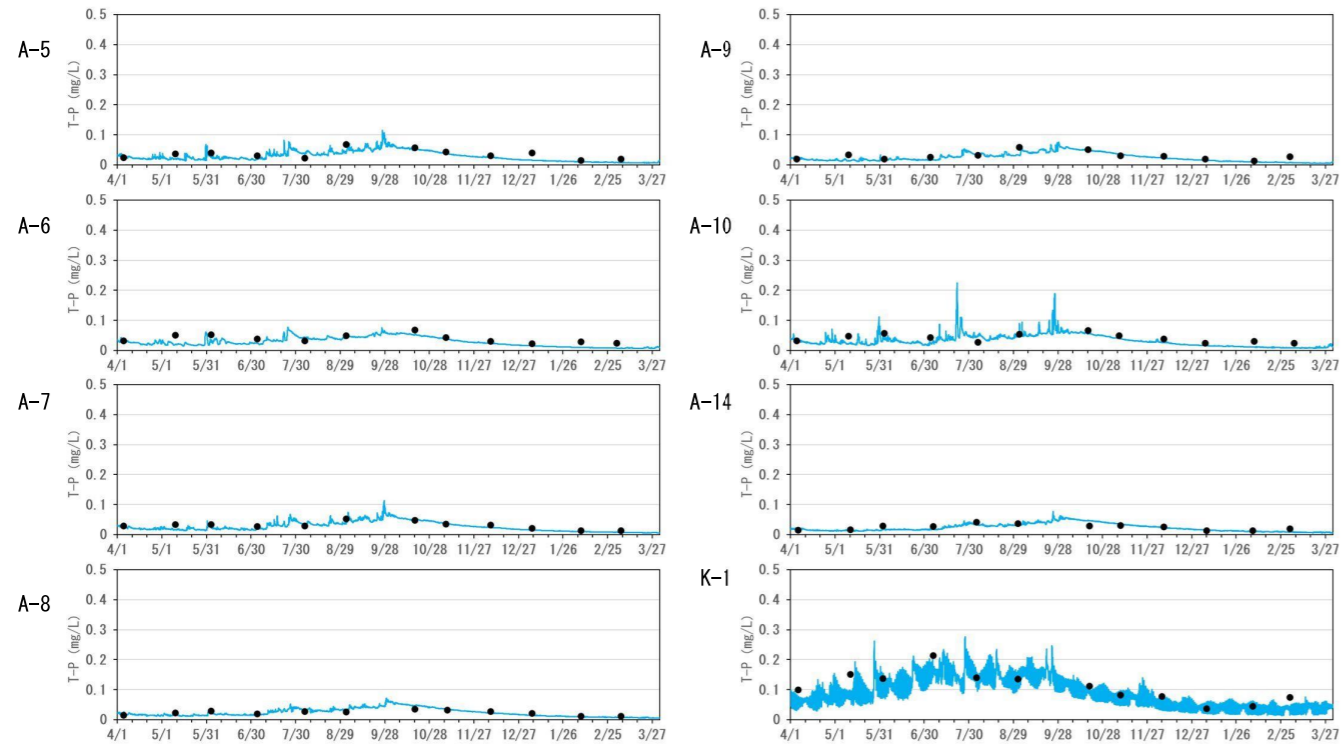
【NH<sub>4</sub>-N】



● 観測(0m) — 計算(表層:海面~2m)

表層

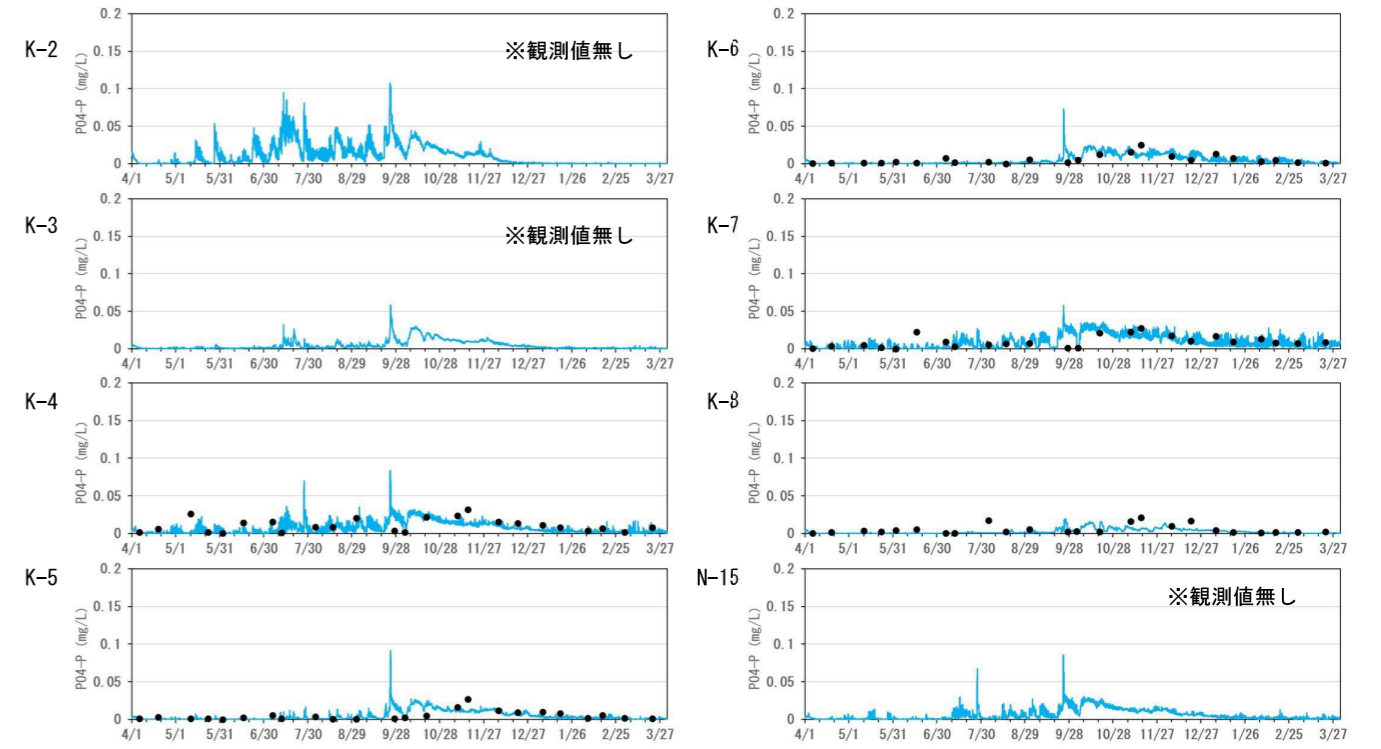
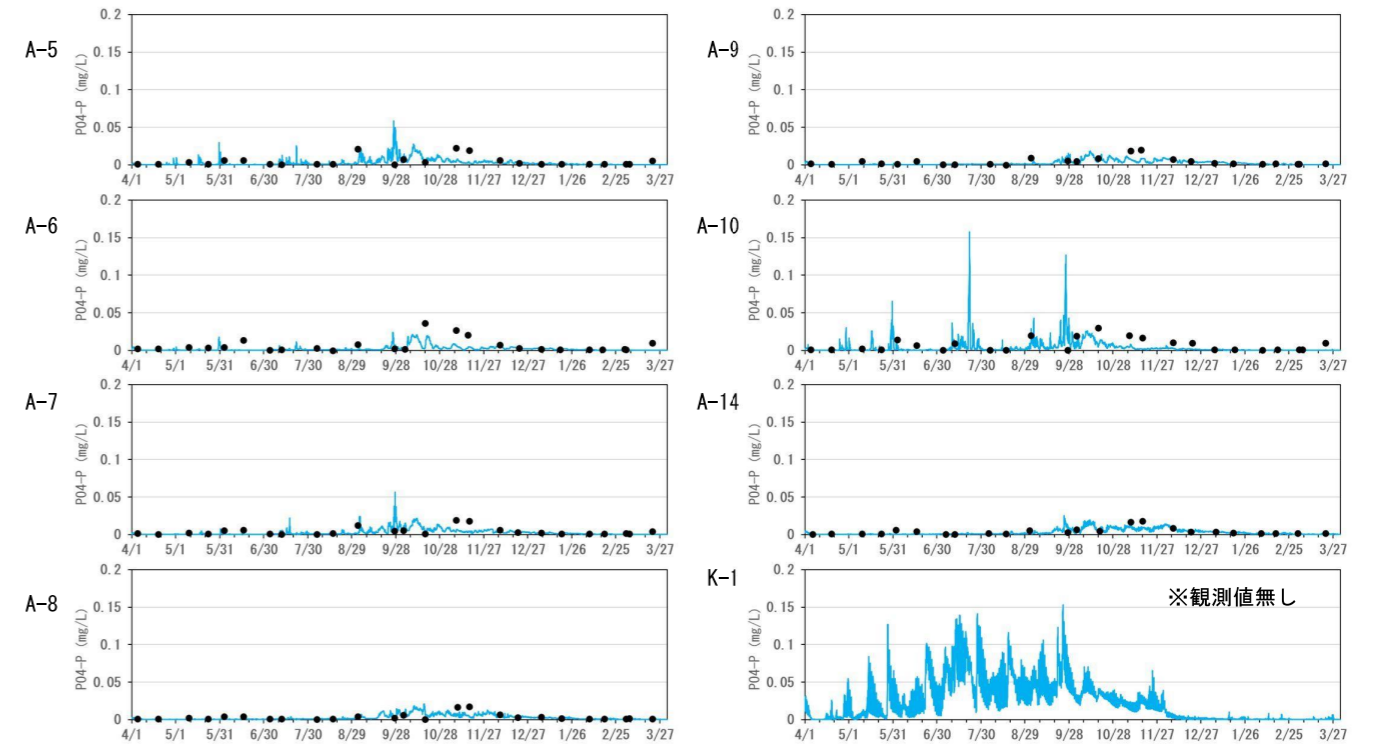
【T-P】



● 観測(0m) — 計算(表層:海面~2m)

表層

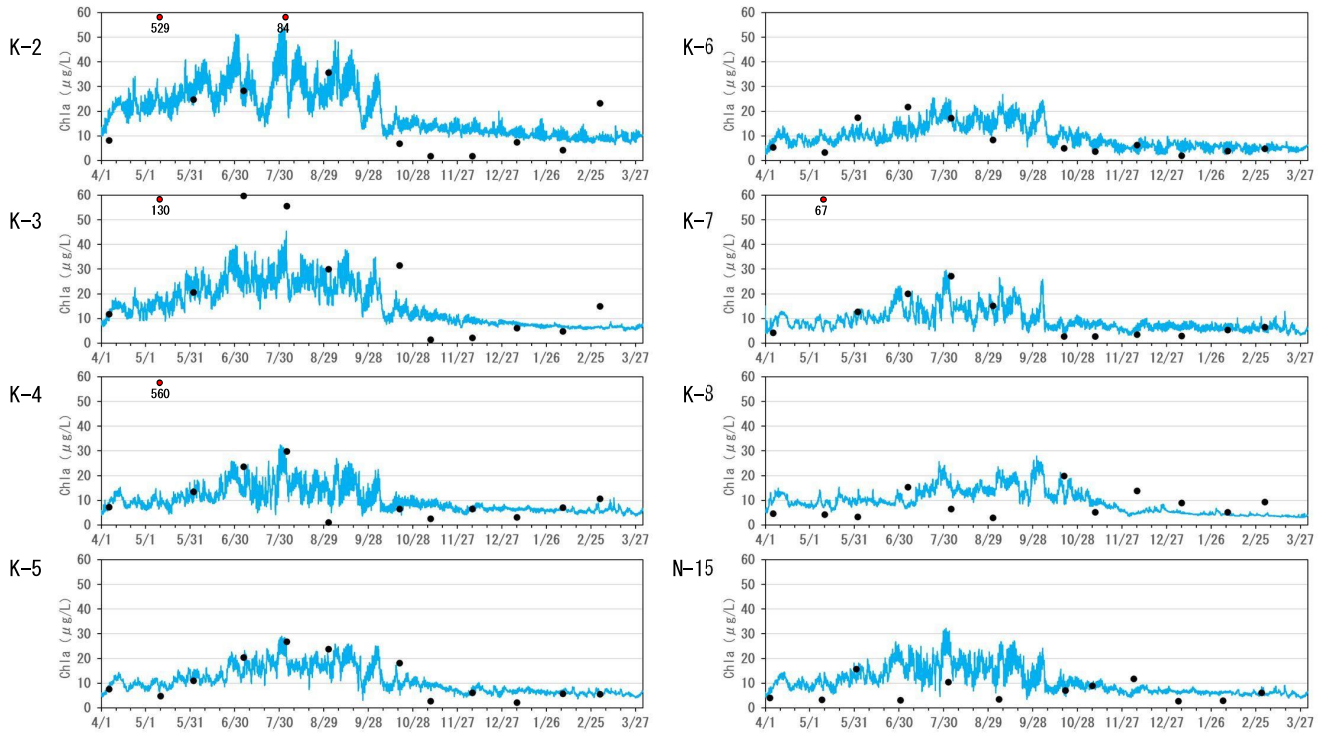
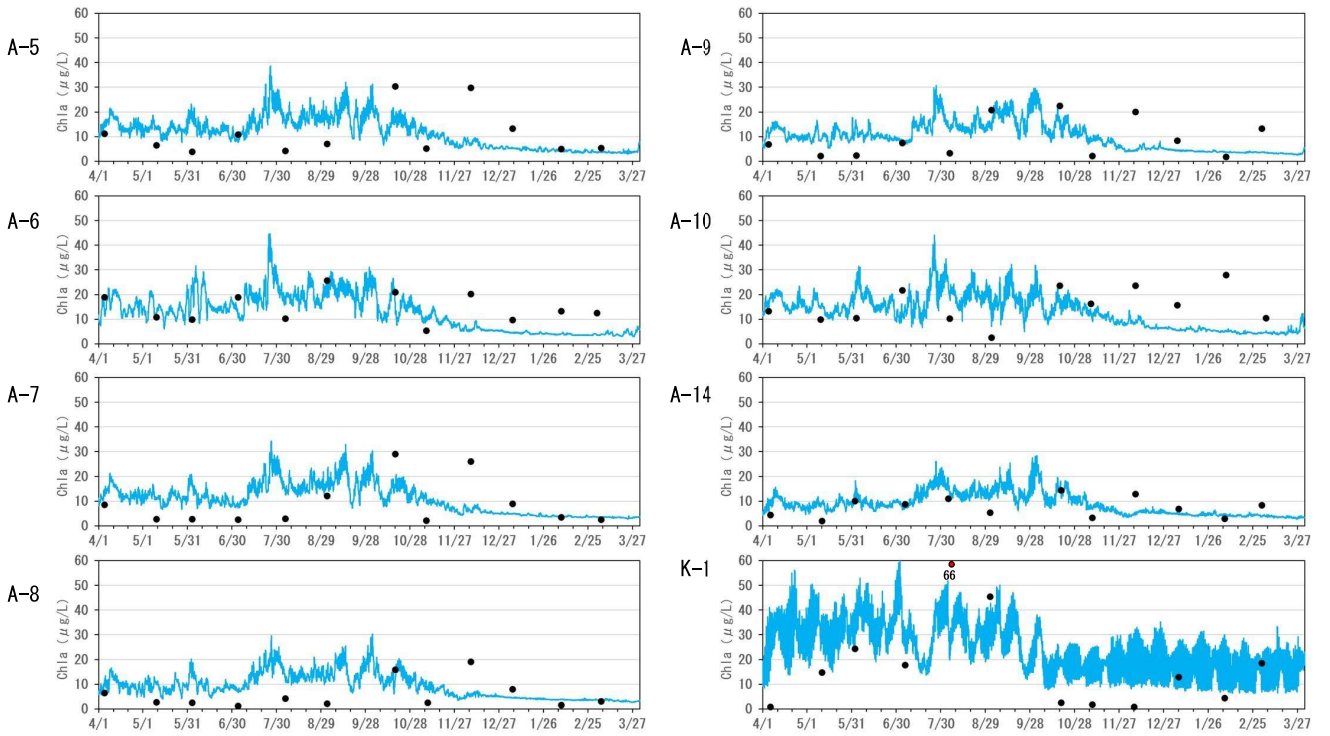
【PO<sub>4</sub>-P】



● 観測(0m) — 計算(表層:海面~2m)

表層

【Chl. a】



● 観測(0m) — 計算(表層:海面~2m)