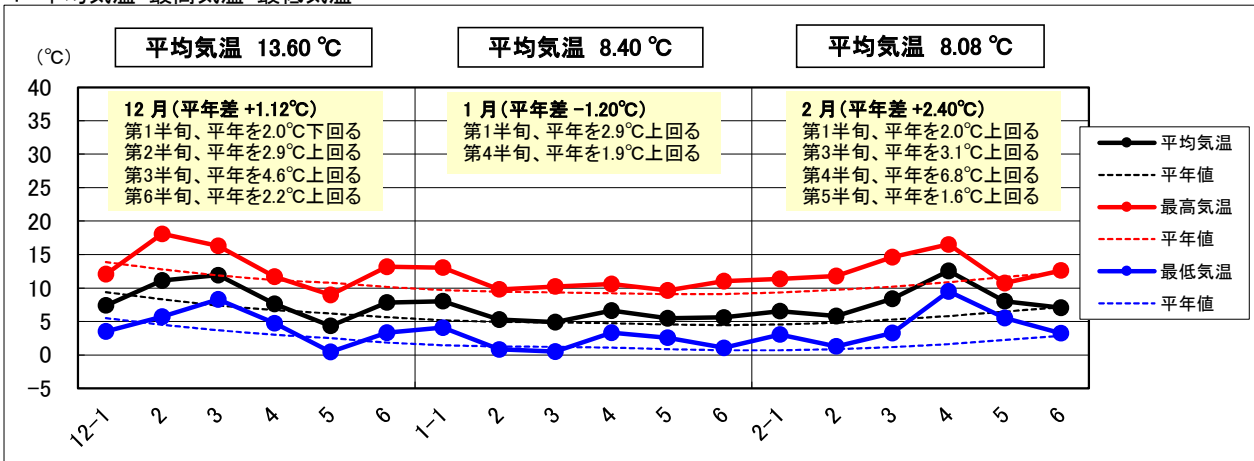
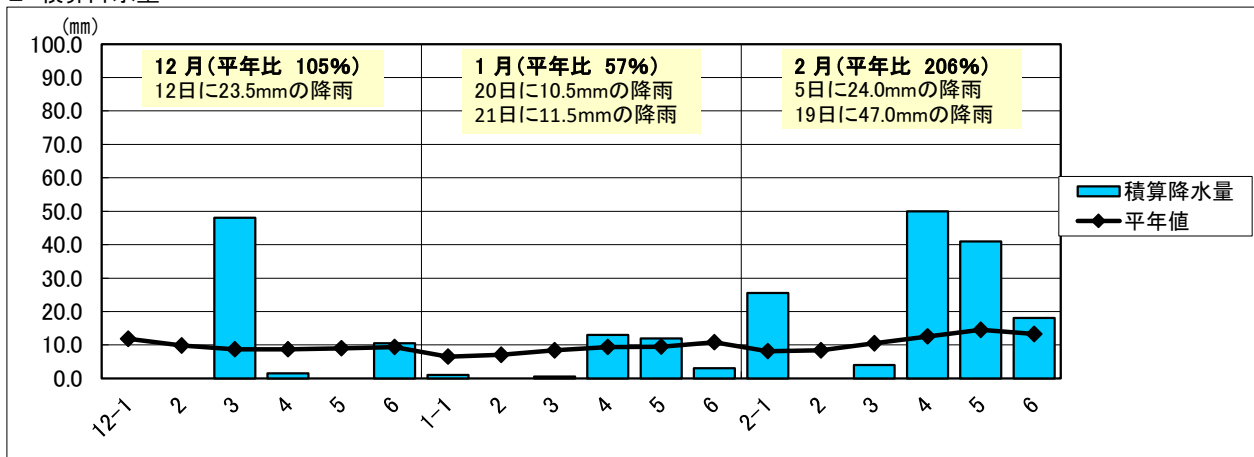


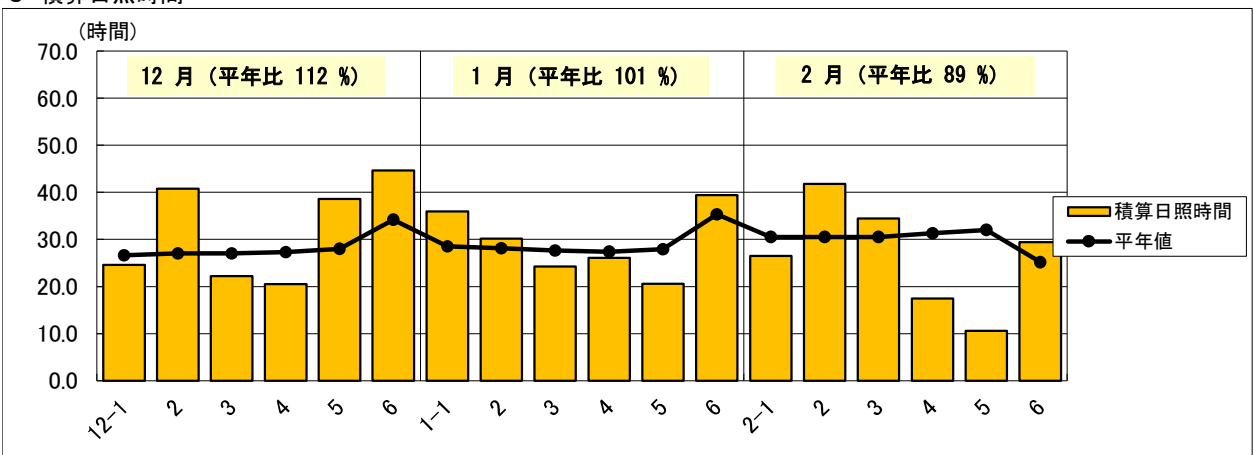
1 平均気温・最高気温・最低気温



2 積算降水量



3 積算日照時間



日付	平均気温	平年値	(平年差)	最高気温	平年値	(平年差)	最低気温	平年値	(平年差)	積算降水量	平年値	(平年比)	積算日照時間	平年値	(平年比)
12-1	7.4	9.4	-2.0	12.1	13.9	-1.8	3.5	5.5	-2.0	0.0	11.8	0%	24.6	26.6	92%
2	11.2	8.3	2.9	18.1	12.8	5.3	5.7	4.5	1.2	0.0	9.8	0%	40.8	27.0	151%
3	11.9	7.4	4.6	16.3	11.9	4.5	8.3	3.7	4.6	48.0	8.7	552%	22.2	27.0	82%
4	7.7	6.7	0.9	11.7	11.2	0.5	4.8	3.0	1.7	1.5	8.7	17%	20.5	27.3	75%
5	4.4	6.2	-1.8	9.0	10.8	-1.8	0.5	2.5	-2.0	0.0	9.0	0%	38.6	28.0	138%
6	7.9	5.7	2.2	13.2	10.2	3.0	3.3	1.9	1.5	10.5	9.4	112%	44.6	34.2	130%
1-1	8.0	5.2	2.9	13.1	9.7	3.4	4.1	1.4	2.7	1.0	6.5	15%	35.9	28.5	126%
2	5.3	5.0	0.3	9.8	9.5	0.4	0.8	1.3	-0.4	0.0	7.0	0%	30.2	28.1	107%
3	4.9	4.9	0.0	10.3	9.3	0.9	0.5	1.2	-0.7	0.5	8.4	6%	24.2	27.6	88%
4	6.6	4.7	1.9	10.6	9.2	1.4	3.3	1.1	2.2	13.0	9.4	138%	26.1	27.4	95%
5	5.5	4.6	0.9	9.6	9.1	0.5	2.6	0.9	1.7	12.0	9.5	126%	20.6	27.9	74%
6	5.6	4.5	1.2	11.0	9.1	1.9	1.1	0.7	0.4	3.0	10.8	28%	39.4	35.3	112%
2-1	6.6	4.5	2.0	11.4	9.3	2.0	3.1	0.7	2.4	25.5	8.1	315%	26.5	30.5	87%
2	5.8	4.8	1.0	11.8	9.7	2.1	1.3	0.9	0.4	0.0	8.4	0%	41.8	30.5	137%
3	8.4	5.3	3.1	14.6	10.2	4.4	3.3	1.2	2.1	4.0	10.5	38%	34.5	30.5	113%
4	12.6	5.8	6.8	16.5	10.9	5.6	9.5	1.6	7.9	50.0	12.5	400%	17.5	31.3	56%
5	8.0	6.5	1.6	10.7	11.6	-0.9	5.5	2.2	3.3	41.0	14.5	283%	10.6	32.0	33%
6	7.1	7.1	0.0	12.7	12.3	0.3	3.3	2.9	0.4	18.0	13.2	136%	29.4	25.2	117%