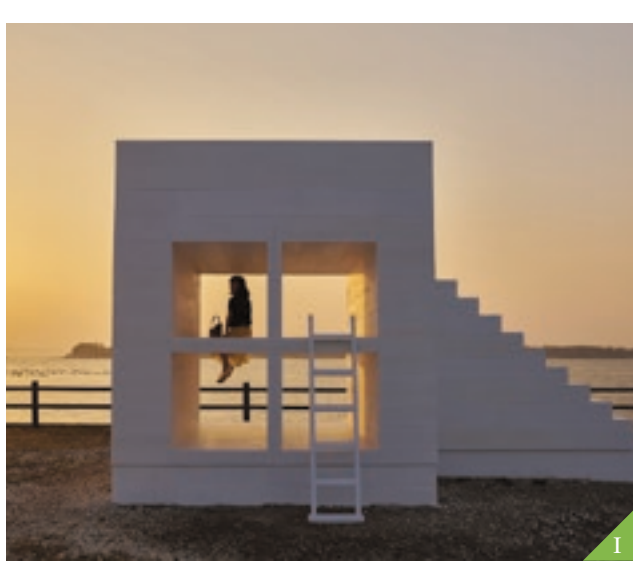




F Takeshima Island (Gamagori City)
The island has many famous things to see like a famous shrine where people pray for happy marriages and safe childbirth, as well as beautiful natural scenery. There is also an aquarium nearby.



I Sakushima Island (Nishio City)
Artworks affixed all over this beautifully preserved bit of land make it a perfect escape destination, easy to get by ferry and much sought after by couples.



K Yuya Onsen (Shinshiro City)
This hot spring town is located in a famous scenic area where Japanese inns line the river.



G Cape Irigo (Tahara City)
This cape is located at the tip of Atsumi Peninsula. Legends of love live on at Koijigahama, or "Lover's Beach," a beautiful sandy beach that stretches away from the lighthouse.



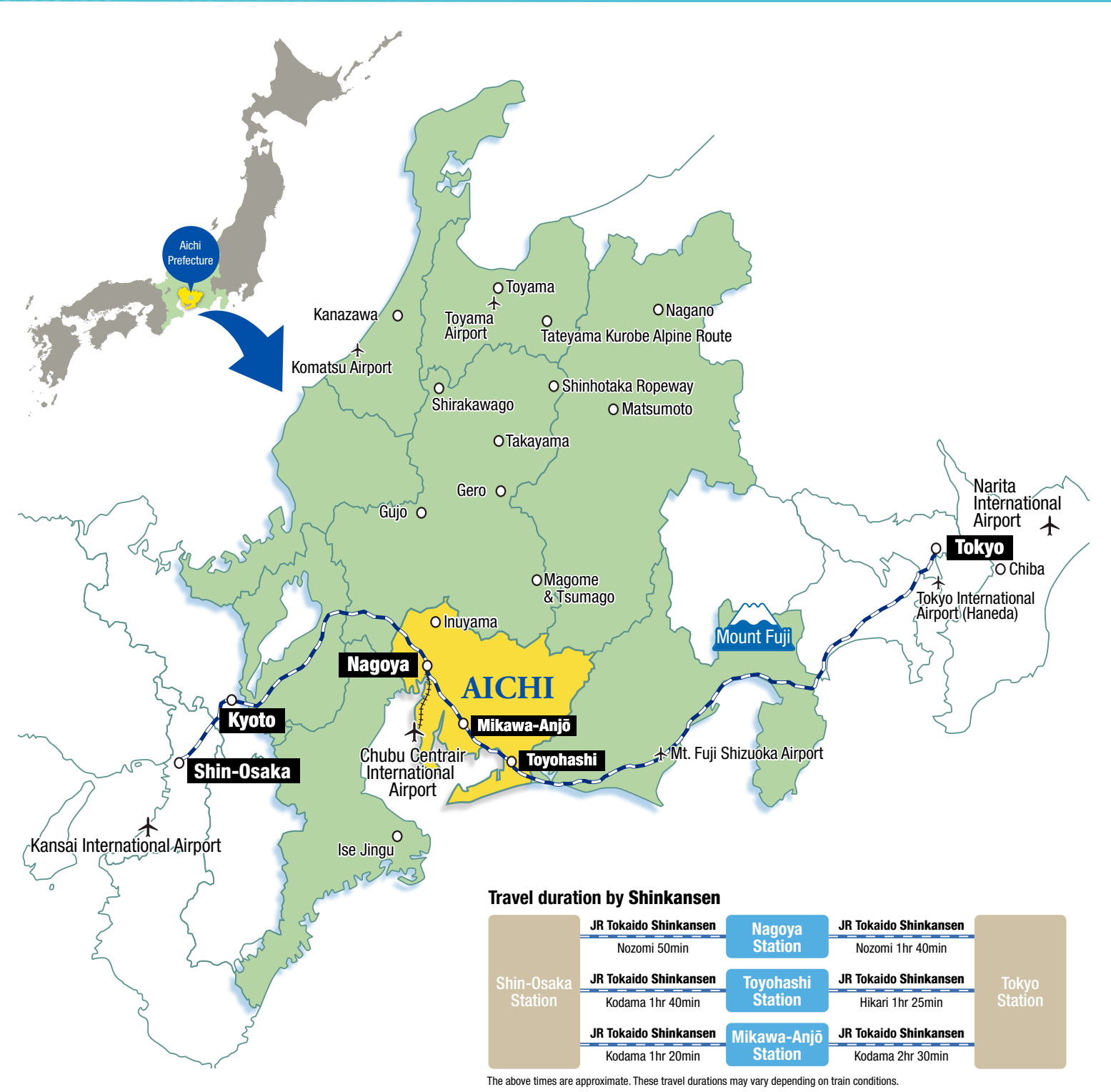
J Mineral Foundation Crafting Experience naori (Toei Town)
Toei-Town is a source of the mineral sericite, a prime ingredient in cosmetic foundation. How about creating your own handmade cosmetic from the basic materials?

HOT SPRINGS

L Minamichita Hot Springs (Minamichita Town)
This is a hot spring resort area including towns of Utsumi, Yamami, and Toyohama. Soaking in an outdoor bath while taking a magnificent view of the sea before you is a special experience.

M Gamagori Hot Springs (Gamagori City)
The four hot springs of Miya, Gamagori, Katahara, and Nishiura are collectively known as the Gamagori Hot Spring Villages. The surrounding area features other fun attractions such as a theme park and fruit picking.

ACCESS TO AICHI PREFECTURE



Aichi Now

OFFICIAL SITE FOR TOURISM AICHI

WWW.AICHI-NOW.JP/EN

Search **AICHI NOW**

Easy accommodation booking

Interesting & engaging events!

Getting to & around

Fun & time-saving itineraries!

Gourmet Information

International Tourism and Conventions Division, Bureau of Tourism and Conventions, Aichi Prefectural Government

3-1-2 Sannomaru, Naka-ku, Nagoya City, Aichi Prefecture 460-8501 Tel: 052-954-6378 FAX: 052-973-3584

2025.2

AICHI

TOURISM GUIDE

English

National Treasure Inuyama Castle

Shibazakura Festival

Technology and tradition,
city and nature exist together

Minamichita Hot Springs

Ghibli Park

Oasis 21

Korankei

Sakushima Island

<https://www.aichi-now.jp/en/>

<https://www.aichi-now.jp/en/amazing/>

A Korankei (Toyota City)
November
Autumn tints approximately 3,000 Japanese maple trees with unforgettable fall colors, all near the year-round charming old town of Asuke.

B Obara Shikizakura Autumn Cherry Blossoms (Toyota City)
November
Beautiful cherry blossoms rivaling autumn leaves in beauty. These unusual flowers bloom in both spring and autumn.

NATURE

C Shibazakura Festival (Moss Pink Festival) (Toyone Village)
Mid-May to early June
Walk through one of the highest hillside flower fields in Japan, where blossoms meet the sky. You can also take a wonderful airborne stroll on the ski lift.

D Rapeseed Blossom Festival (Tahara City)
January to the end of March
A solid carpet of yellow. Rapeseed blossoms announce the arrival of spring on the Atsumi Peninsula.

E Owari Tsushima Fuji Matsuri (Owari Tsushima Wisteria Festival) (Tsushima City)
Mid-April to late April
A curtain of purple spreads overhead. The scene is also lit up at night.



1 Nagoya Castle Hommaru Goten Palace (Nagoya City)

Nagoya Castle's Hommaru Palace was completed in 1615 and was originally used as the administrative offices and residences of the lord of Owari. Long-awaited restoration of the Hommaru Palace finally began in 2009, and the completed work was unveiled in June of 2018.



2 National Treasure Inuyama Castle (Inuyama City)

A national treasure, this castle features marvelous views of mountains and the river from the top level.



3 Kiyosu Castle (Kiyosu City)

A great reconstruction of local warlord and hero Oda Nobunaga's castle, where visitors can get to know the history of the city during the Sengoku period.

HISTORY & CULTURE



4 Ghibli Park (Nagakute City)

The facility representing the world of Studio Ghibli is built at Expo 2005 Aichi Commemorative Park.

5 The Museum Meiji-Mura (Inuyama City)

This open-air museum exhibits Meiji period (1868-1912) buildings. The area is rich in nature, and visitors can enjoy steam locomotives and other vehicles of the time. ※Steam locomotives may be out of service.



8 Atsuta Jingu Shrine (Nagoya City)

This historical shrine stands amid a forest alive with myth. Enshrined here is the Sacred Kusanagi no Mitsuhrugi, one of the Three Imperial Regalia of Japan.



6 Nagoya Omotenashi Busho-Tai®

The heroes who unified Japan and the legendary Ninja Corps are getting the word out on Nagoya's attractions, with a focus on the Nagoya area.



7 Hattori Hanzo and The Ninjas®

EVENTS

9 Inuyama Festival (Inuyama City)

1st Saturday and Sunday in April

10 Kamezaki Shiohi Festival (Handa City)

May 3rd and 4th

11 Sunari Festival (Kanie Town)

1st Saturday and Sunday in August

12 Chiryu Festival (Chiryu City)

May 2-3 (Bunraku and karakuri doll performance every other year)

13 Owari Tsushima Tenno Festival (Tsushima City)

4th Saturday and Sunday in July

14 World Cosplay Summit (Nagoya City)

Early August

15 Tezutsu-Hanabi (Toyohashi City and other areas)

April to November

Traditional Japanese festivals registered as UNESCO Intangible Cultural Heritage "Yama, Hoko, Yatai, Float Festivals in Japan". *: Yama, Hoko and Yatai are local terms to designate the various kinds of floats used in traditional float festivals in Japan.

INDUSTRIAL TOURISM



16 Aichi Museum of Flight (Toyoyama Town)

The current T-4 Blue Impulse has been added to the display of actual aircraft such as the YS-11, which flew for the first time at Nagoya Airport. Try becoming a pilot or mechanic, or join a hands-on progra, at the Science Lab.



18 SCMAGLEV and Railway Park (Nagoya City)

Along with actual vehicles on display, a variety of simulators, train set dioramas, and other exhibits let visitors enjoy learning about history and workings of the railways.



22 Toyota Kaikan Museum (Toyota City)

At the Toyota Headquarters Exhibition Hall, Toyota showcases various company initiatives such as the latest environmental and safety technologies, mobility, and social contribution activities with videos, exhibits, and hands-on exhibits.



19 Arimatsu Shibori Traditional Tie-Dyeing (Nagoya City)

Arimatsu Shibori is a technique in which silk or cotton fabric is bound with thread, and the thread is untied after dyeing to reveal a three-dimensional pattern. Small Shibori items make a perfect souvenir.

20 "Huge collection of lucky cats" Maneki-Neko Museum (Seto City)

This is one of the largest museums in Japan dedicated to maneki-neko beckoning cat statues. Almost 5000 designs from all over Japan are beckoning for good fortune and creating a very auspicious spot.



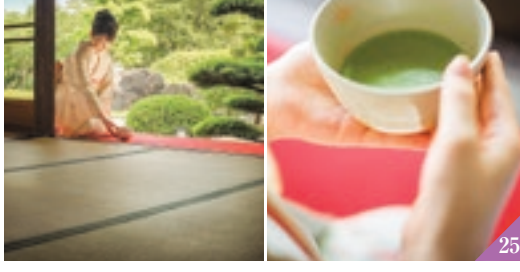
23 Toyota Commemorative Museum of Industry and Technology (Nagoya City)

This museum makes use of remaining factory and preserves the birthplace of the Toyota Group. See, hear, and touch Toyota's history, technology, and passion.



21 Hatcho Miso (Okazaki City)

There are two miso storehouses that continue to treasure and preserve the tradition of Hatcho Miso today. Why not try some delicious miso dishes after visiting the historical miso storehouses?



24 Pottery Footpath (Tokoname City)

This nostalgic townscape is a perfect setting for photographs. You can also purchase Tokoname-Yaki or Tokoname-ware and try your hand at crafting ceramic art.



25 Nishio Matcha (Nishio City)

Nishio City is one of Japan's premier matcha-producing areas. As well as factory tours and the opportunity to try your hand at stone-milling, you can also drink matcha tea in a traditional tatami tea-room.

AMUSEMENT PARK



26 Port of Nagoya Public Aquarium (Nagoya City)

Home to a large group of popular marine animals, including belugas and orcas. The dolphin performance, presented in Japan's largest pool, is a must-see event!



27 LEGOLAND® Japan (Nagoya City)

Popular all over the world, this outdoor theme park for families allows you to become fully absorbed in the world of LEGO®.

26 Port of Nagoya Public Aquarium (Nagoya City)

Home to a large group of popular marine animals, including belugas and orcas. The dolphin performance, presented in Japan's largest pool, is a must-see event!

27 LEGOLAND® Japan (Nagoya City)

Popular all over the world, this outdoor theme park for families allows you to become fully absorbed in the world of LEGO®.



28 Laguna Ten Bosch (Gamagori City)

This resort includes an amusement park, a shopping mall, and nice restaurants. Employees at the hotel directly connected to the park include a dinosaur robot!

SHOPPING

29 Nagoya Station (Nagoya City)

Nagoya Station is constantly being developed and remodeled. You can find the latest large shopping malls around the area.



30 Underground Shopping Area (Nagoya City)

This huge shopping area spreads under the Nagoya Station and Sakae areas. Shop in comfort, even on those rainy or hot days.



31 Osu Shopping District (Nagoya City)

Electronics, tradition and pop-culture: looks like Akihabara, but here rain won't get you, and its dwellers will keep you marvelled at the diversity and color!

32 Oasis 21 (Nagoya City)

Spaceship Aqua, a futuristic glass rooftop with a reflecting pool. Below it, a tourist information center, an event space, and lots of shops.



33 Hitsumabushi

In Aichi's version of the unadon eel/rice bowl, the first portion is enjoyed as is, the second is topped with condiments, and for the third, tea is poured over the remaining eel and rice, which is eaten as ochazuke.

34 Tebasaki Karaage

Light, tasty, spicy and reasonable chicken wings typify Nagoya-style dishes. Have no doubt, once you start eating them, you won't want to stop.



GOURMET



36 Miso-Oden

Oden made with bean miso is one of the local foods of Aichi Prefecture. * Soybean miso is a miso made with soybeans and salt.

37 Miso-Nikomi Udon

The rich and thick soup with soybean miso matches exquisitely with the chewy noodles.

38 Kishimen

Its thin and flat noodles are delicious.

39 Ogura Toast

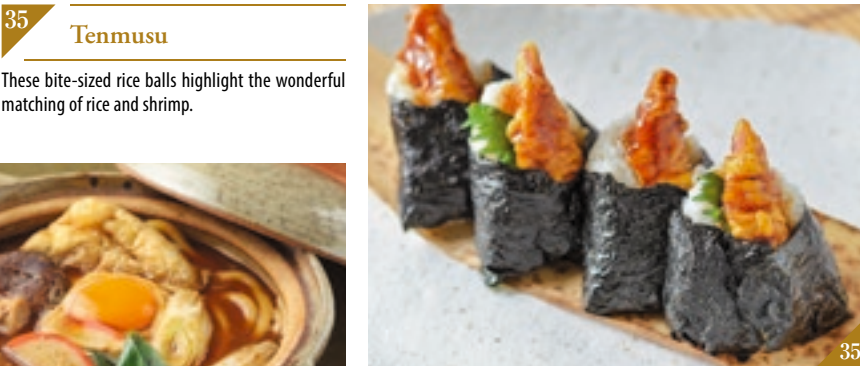
Thick sliced toast with plenty of red bean paste.

40 Taiwan Ramen

Spicy and tasty! Taiwan Ramen from Nagoya, which cannot be eaten even in Taiwan.

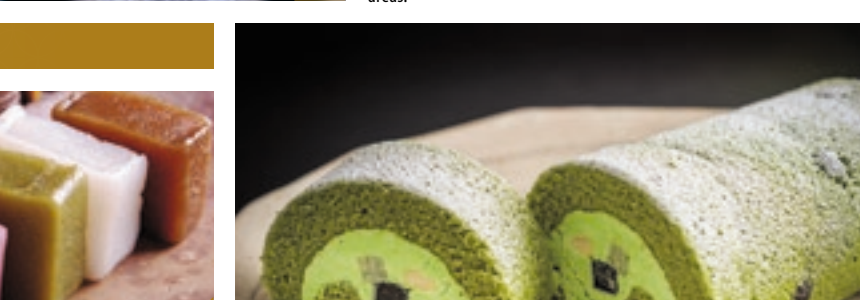
41 Fugu Pufferfish

Located just off the coast of the Chita Peninsula, the islands of Himakajima, Shinojima, and Sakushima make up one of Japan's leading fugu producing areas.



35 Tenmusu

These bite-sized rice balls highlight the wonderful matching of rice and shrimp.



36 Miso-Oden

Oden made with bean miso is one of the local foods of Aichi Prefecture. * Soybean miso is a miso made with soybeans and salt.

37 Miso-Nikomi Udon

The rich and thick soup with soybean miso matches exquisitely with the chewy noodles.

38 Kishimen

Its thin and flat noodles are delicious.

39 Ogura Toast

Thick sliced toast with plenty of red bean paste.

40 Taiwan Ramen

Spicy and tasty! Taiwan Ramen from Nagoya, which cannot be eaten even in Taiwan.

41 Fugu Pufferfish

Located just off the coast of the Chita Peninsula, the islands of Himakajima, Shinojima, and Sakushima make up one of Japan's leading fugu producing areas.

SWEETS



42 Oni-Manju



43 Uiro



44 Matcha Sweets

The sweets of Aichi Prefecture have great texture, are rich in taste, and make perfect gifts.