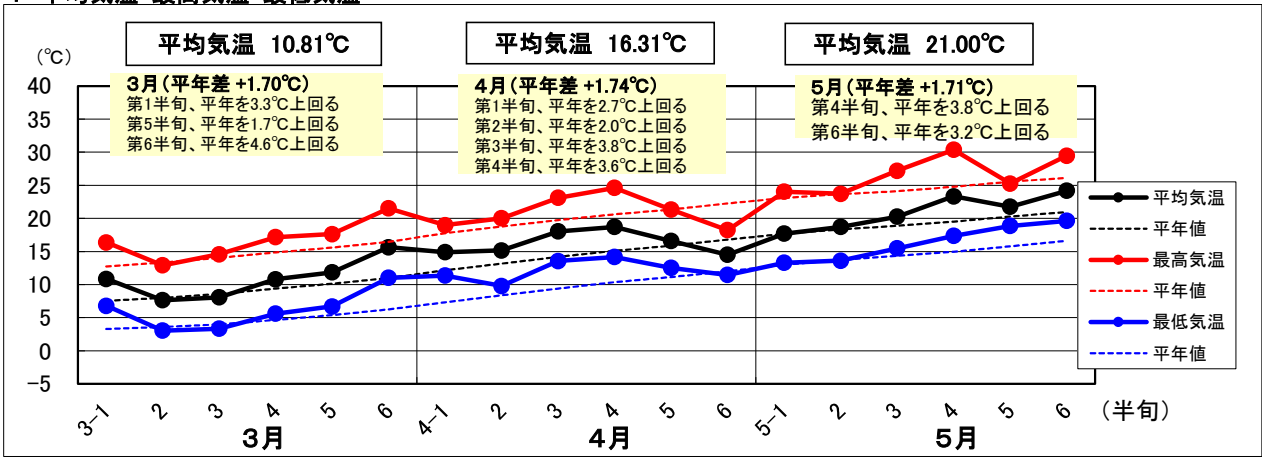
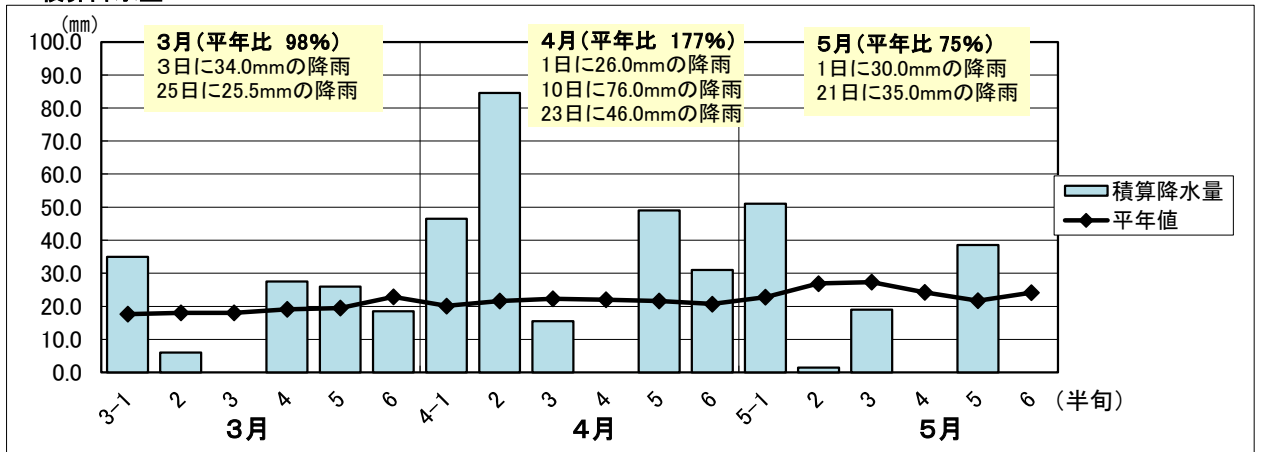


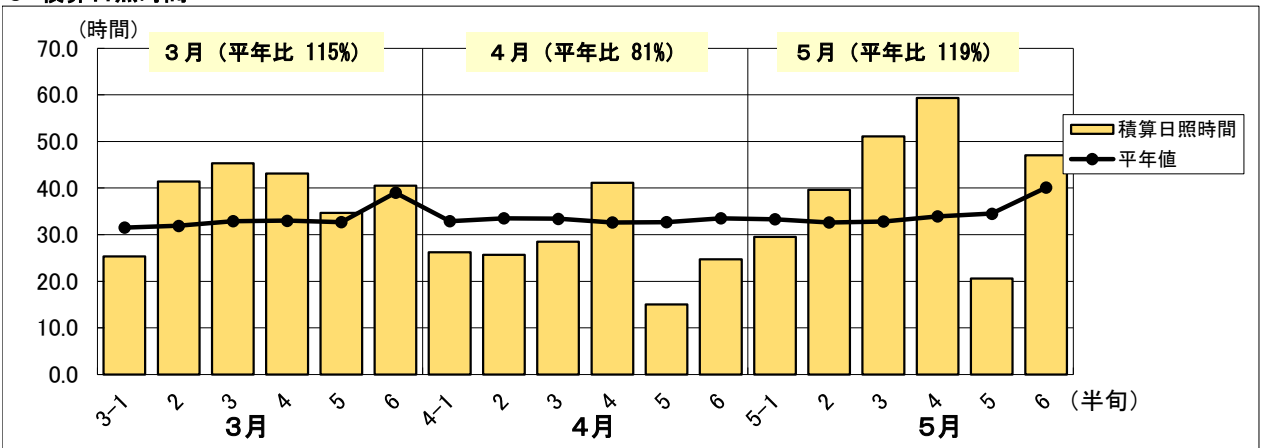
1 平均気温・最高気温・最低気温



2 積算降水量



3 積算日照時間



日付	平均気温	平年値	(平年差)	最高気温	平年値	(平年差)	最低気温	平年値	(平年差)	積算降水量	平年値	(平年比)	積算日照時間	平年値	(平年比)
3-1	10.9	7.6	3.3	16.4	12.8	3.6	6.8	3.3	3.5	35.0	17.7	198%	25.3	31.5	80%
2	7.7	8.0	-0.3	12.9	13.3	-0.4	3.0	3.6	-0.6	6.0	18.0	33%	41.4	31.9	130%
3	8.1	8.6	-0.5	14.6	14.0	0.5	3.3	4.0	-0.7	0.0	18.0	0%	45.3	32.9	138%
4	10.8	9.4	1.4	17.2	14.9	2.3	5.6	4.7	0.9	27.5	19.1	144%	43.1	33.0	131%
5	11.8	10.1	1.7	17.6	15.6	2.0	6.7	5.4	1.3	26.0	19.5	133%	34.7	32.7	106%
6	15.6	11.0	4.6	21.5	16.5	5.0	11.0	6.3	4.8	18.5	22.9	81%	40.5	39.0	104%
4-1	14.9	12.2	2.72	19.0	17.8	1.2	11.4	7.3	4.0	46.5	20.1	231%	26.2	32.9	80%
2	15.2	13.2	2.0	20.0	18.8	1.2	9.8	8.4	1.4	84.5	21.6	391%	25.7	33.5	77%
3	18.0	14.2	3.8	23.1	19.8	3.4	13.6	9.4	4.2	15.5	22.3	70%	28.5	33.4	85%
4	18.7	15.1	3.6	24.6	20.6	4.0	14.2	10.4	3.8	0.0	22.0	0%	41.1	32.6	126%
5	16.6	15.9	0.7	21.3	21.4	-0.1	12.5	11.2	1.3	49.0	21.6	227%	15.0	32.7	46%
6	14.5	16.8	-2.3	18.2	22.3	-4.0	11.5	12.0	-0.6	31.0	20.7	150%	24.7	33.5	74%
5-1	17.7	17.7	0.0	24.0	23.1	0.9	13.3	13.0	0.3	51.0	22.8	224%	29.5	33.3	89%
2	18.7	18.4	0.3	23.7	23.7	0.0	13.6	13.8	-0.2	1.5	26.9	6%	39.6	32.6	121%
3	20.3	18.9	1.4	27.2	24.1	3.1	15.5	14.3	1.1	19.0	27.3	70%	51.1	32.8	156%
4	23.3	19.5	3.8	30.4	24.8	5.6	17.4	15.0	2.4	0.0	24.2	0%	59.3	33.9	175%
5	21.8	20.3	1.5	25.3	25.6	-0.3	18.9	15.8	3.1	38.5	21.7	177%	20.6	34.5	60%
6	24.2	21.0	3.2	29.5	26.1	3.3	19.6	16.6	3.0	0.0	24.1	0%	47.0	40.1	117%